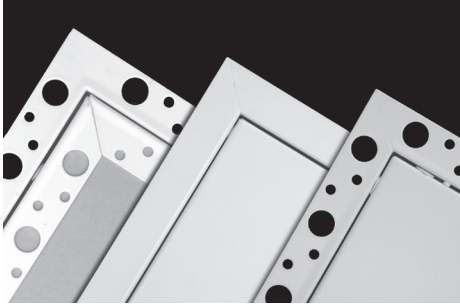


Access Panels Fitting Instructions

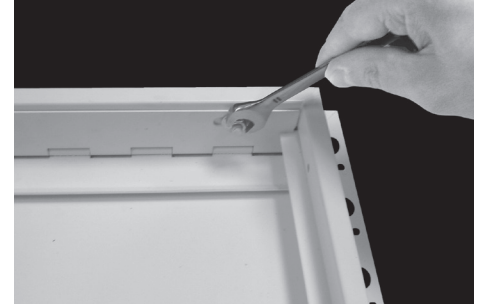
Note: the access panel may require extra support and bracing to allow safe operation.



Panels available with a picture frame or a beaded frame and either a metal door or beaded frame with plaster board faced door.



Insert frame into structural opening which needs to be 5mm larger than panel size, ensuring frame is flush with surface. Then screw fix through fixing points. Additional packers may be needed to prevent distortion of the frame. **DO NOT** fix through the face of frame.



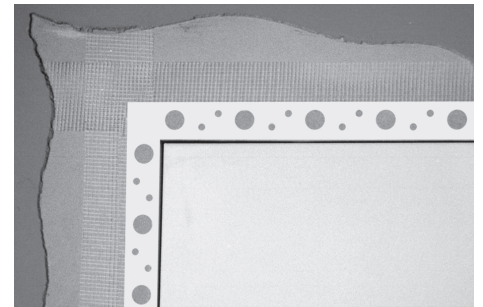
Continuous hinge doors can be removed from the frame by the bolts securing the hinge.



Simple to operate: remove the plastic plug, insert the Tee Key into the budget lock and rotate 45 degrees. Ensure there is sufficient clearance for the lock to operate correctly.



Fire rated doors have smoke strips fitted on the frame. **DO NOT** interfere with these seals.



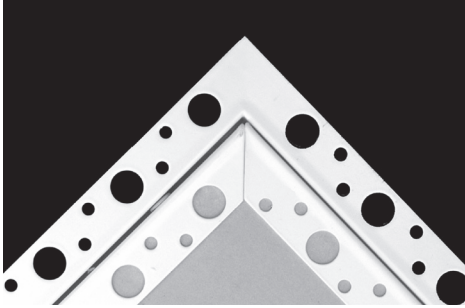
Access Panels with a beaded frame are designed for a wet finish. Scrim tape must be applied to all beaded edges prior to plastering. **IMPORTANT NOTE:** If scrim tape is not used the plaster may not adhere to the access panel's frame.

Refit the door and check operation.

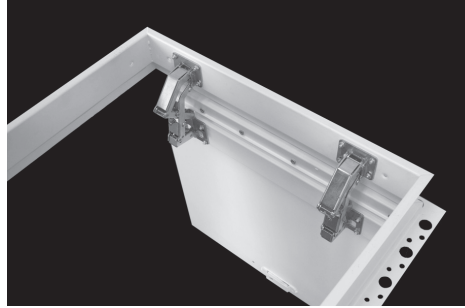
Ensure there is sufficient clearance behind the frame for the budget lock to operate correctly.

Access Panels Fitting Instructions

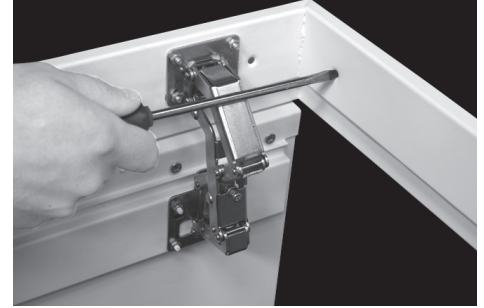
Note: the access panel may require extra support and bracing to allow safe operation.



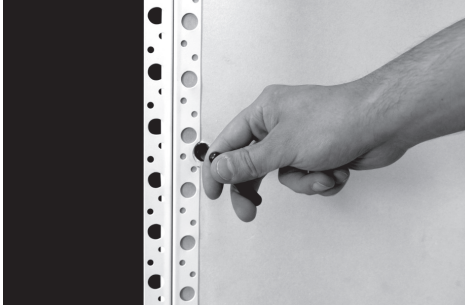
Panel incorporates a beaded frame with plaster board faced door.



When panel is installed, we recommend that hinges should not be removed.



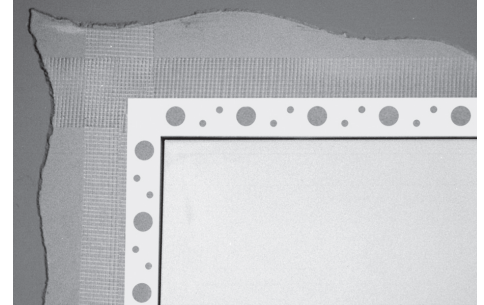
Insert frame into structural opening which needs to be 5mm larger than panel size, ensuring frame is flush with surface. Then screw fix through fixing points. Additional packers may be needed to prevent distortion of the frame. **DO NOT** fix through the face of frame.



Simple to operate: remove the metal plug, insert the Tee Key into the budget lock and rotate 45 degrees. Ensure there is sufficient clearance for the lock to operate correctly.



Fire rated doors have smoke strips fitted on the frame. **DO NOT** interfere with these seals.



Access Panels with a beaded frame are designed for a wet finish. Scrim tape must be applied to all beaded edges prior to plastering. **IMPORTANT NOTE:** If scrim tape is not used the plaster may not adhere to the access panel's frame.

Refit the door and check operation.

Ensure there is sufficient clearance behind the frame for the budget lock to operate correctly.