

# THE HAMILTON CANOPY

## Data Sheet

The Hamilton big span canopy is our largest freestanding canopy and can span up to 11 metres in width and has an unlimited length. It is the perfect solution for large areas which require cover from the weather, such as outdoor gyms, alfresco dining areas or open air seating areas.



0800 389 9072

[www.ablecanopies.co.uk](http://www.ablecanopies.co.uk)  
[sales@ablecanopies.co.uk](mailto:sales@ablecanopies.co.uk)

### Dimensions:

Length:	Unlimited
Width:	Up to 11 metres
Height:	To your specification
Spacing Between Posts:	Up to 6 metres

### Features:

Wall Mounted or Freestanding:	Freestanding
Suitable for:	Education   Hospitality   Leisure   Retail   Commercial   Healthcare
Guarantee:	N/A
Life Expectancy:	Up to 25 Years
Maintenance:	Requires only periodic cleaning
Installation Type:	Permanent
Retractable/Collapsible:	No
Method of Fixing:	Posts are installed into the ground with 10mm thick base plates into 300mm pad stones; the dimensions of which depend on the site survey

### Frame Specifications:

Construction Material:	100mm x 100mm x 5mm steel hollow section
Guttering:	Upvc guttering and downpipes included as standard
Frame Finish:	Powder coated Also available galvanised at an additional cost
Colour Options:	Supplied in any standard RAL colour Other RAL colours are available however, they may incur additional costs
Fixings:	316 marine grade stainless steel fixings

### Roof Specifications:


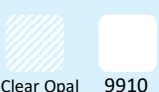
Roof Frame:	Steel roof frame with steel roof bars and aluminium rafter bars
Roof Covering:	16mm structured polycarbonate panels
UV Protection:	Over 98%   This also means the roof panels will not turn yellow over time due to UV degradation
Light Transmission:	73% for clear panels and 35% for opal panels
Strength:	Vandal and shatter resistant   200 times stronger than glass
Colour Options:	Available in clear and opal
Temperature Resistance:	From -20°C to +100°C

## International Standards:

**Fire Ratings:** Roof panels: European standard BS476 Part 7 class 1fire and EN 13501 B-S1, D0.

**CE Marked** Yes to UKCA BS EN1090-1:2009+A1:2011

## Colour Options:

	Standard Colours	Non Standard Colours (Additional costs may apply)
<b>Steel Framework</b>	Our standard RAL colours are:  9910 3000 1023 6018 6005 9005 7016 7012 7001 5015 5005	Any RAL colour
<b>Aluminium Roof Rafter Bars</b>	 9910	Any RAL colour
<b>Polycarbonate Roof Covering</b>	 Clear Opal 9910	N/A

## Weather Protection:

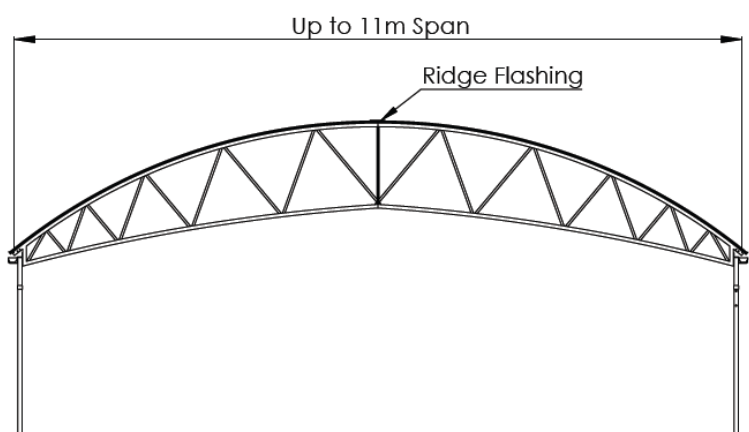
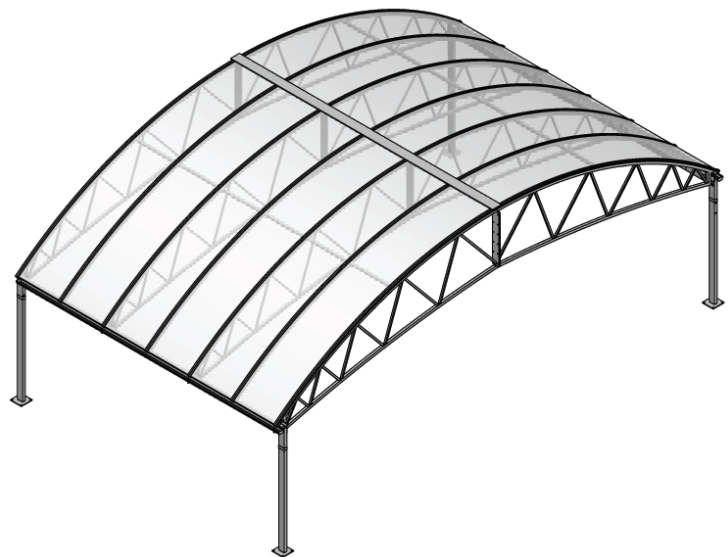


## Available Upgrades:

Post Pads	✓
Signage	✓
Polycarbonate Side & Front Fills	✓
Tensile Fabric Side Panels	✗
Rainbow Package	✓
Roller Shutters	✓
Coloured Polycarbonate	✗
Guttering and uPVC downpipes	N/A supplied as standard
Gable Ends	N/A

## Technical Files Available:

PDF CAD File	✓
DXF CAD File	✓
IGES CAD File	✓
STL CAD File	✓
BIM File	✓
NBS Spec	✓



0800 389 9072

[www.ablecanopies.co.uk](http://www.ablecanopies.co.uk)  
[sales@ablecanopies.co.uk](mailto:sales@ablecanopies.co.uk)

9-11 Faraday Close, Gorse Lane Industrial Estate, Clacton on Sea, Essex CO15 4TR

V1.3 LU111124