

Shade & Shelter for Hospitality and Leisure

0800 389 9072

www.ablecanopies.co.uk


able
canopies
The Canopy Experts!



Welcome

Able Canopies provide quality canopies, shelters, covered walkways and fabric shade systems to commercial organisations across the UK, specialising in the Leisure, Hospitality and Education sectors.

As “The Canopy Experts”, our dedicated team is passionate about helping our clients gain more from their outdoor areas. And, our flexible way of working allows us to tailor our service and products to suit the needs of any organisation, from hoteliers and leisure facility managers, to architects and large main contracting firms.

Helping you to maximise your space, capabilities and revenue

By working closely with you, we can transform your underused spaces into attractive and functional areas that enhance and develop not only your site, but your business as a whole; whether by dramatically expanding your all-weather dining capacity by introducing cover to an al fresco dining area, or providing your guests with a luxurious outdoor seating and socialising area which ensures they return to your establishment time and again.

We offer a complete turnkey solution, working with you at all stages of your project, from the initial design through to manufacture and installation, and then beyond with our comprehensive After Sales service.

Our Commitment to Quality, Health & Safety, the Environment and You.

At Able Canopies we understand the importance of delivering consistent high quality through every process that we do, both “behind the scenes” and through our customer service. As part of this commitment to our customers, we are accredited to ISO9001, ISO14001, and OHSAS18001, and also hold CHAS and Constructionline accreditations. Able Canopies has also been audited and approved for CE Marking.

Our products will always be installed by one of our highly skilled and experienced fitting teams, to ensure your products are finished to the highest possible standards. Our teams are DBS checked, fully HSE compliant and carry industry recognised certifications including SSSTS, CSCS, PASMA and First Aid. We also have extensive experience of working on sites that are still operational, and will do everything possible to keep disruption to an absolute minimum and allow your site to continue to run as normal.

Customised Solutions for Every Industry



Maximise your space...

Sports & Leisure

Our products are widely used by the Sports and Leisure industry to increase the use of outdoor space and facilities, including outdoor gyms and multi-use games areas. In addition, many golf clubs and visitor attractions add canopies to their settings to provide members or visitors with comfortable all-weather areas where they can enjoy refreshments and shelter from the elements.

Whether you are a Theme Park, Golf Club or Sports Centre, our products can help you to maximise your organisation's capabilities and, in turn, feel the benefits from the increased trade that all-weather outdoor areas encourage.

Hospitality

Due to the smoking ban inside public buildings, and the rising popularity of outdoor dining, there is an increasing demand for outdoor spaces that offer all-weather protection.

We offer a variety of products that create ideal all-weather al fresco dining areas – allowing restaurants and cafes to seat customers outdoors at any time of the year, maximising seating capacity. Our canopies can also be used to create comfortable outdoor spaces for smokers, giving shelter, whilst also allowing for fresh air to circulate.

Our adaptable and retractable canopies on pages 6 -11, are especially popular with luxury hotels and resorts as they offer the option to customise an outdoor space to create a certain atmosphere or environment; these provide guests with the ultimate outdoor experience, allowing them to open the roof to enjoy the warm sun, or close it for protection in a sudden downpour.

Architects & Main Contractors

Over the years we have worked with many prominent architects and main contracting firms to provide outdoor shade and shelter at sites across the UK.

We understand that integrating the smaller components, such as external weather protection systems, into a project can be time consuming. With this in mind, we ensure our processes are as simple and straightforward as possible, and take pride in aligning our products and services to suit you.

With over 15 years' of experience, we are on hand to offer specific expertise and guidance, and proven value-engineered products that will ultimately deliver a successful fit-for-purpose solution that brings value to both you and your customers.



Canopies / Tensile Fabric Structures / Shade Sails / Awnings



Section

01

Outdoor Seating & Dining



The Imperial

Add style and tranquillity to any setting with the exquisite Imperial Canopy.

Available as a wall mounted or free standing structure, the Imperial has a robust aluminum frame and features remotely controlled roof slats, which can be adjusted to suit changeable weather conditions and provide the optimum environment for guests.

The Imperial offers the ultimate luxury outdoor living experience with many optional extras to enhance your guests' comfort, including LED lighting to enable the canopy to be used into the night, and fabric screens and glass side panels to provide extra weather protection and an enclosed feel to the structure.

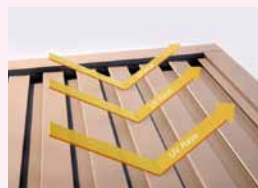
Maximum unit size: 6m x 4.5m - multiple units can be constructed together to create a larger area of cover.

Perfect for creating luxury outdoor areas for hotels, spas and leisure centres.



Adjustable Roofing to Suit Weather Conditions ← →

Applicable to Imperial and Henley Canopies



Partially or totally screen sunlight



Allow for air circulation



Close fully to shelter from the rain

The Henley

The Henley offers a luxury outdoor living experience, with a sleek aluminium frame, and roof slats which can be effortlessly adjusted to offer the ultimate comfort for guests.

As a streamlined alternative to the Imperial, the Henley offers many of the benefits of the Imperial yet has a smaller profile and fewer optional extras to provide a lower cost solution.

Available as a wall mounted or free standing structure, the Henley creates elegant outdoor cover, ideal for courtyards and gardens.

Maximum unit size: 6m x 4.5m - multiple units can be constructed together to create a larger area of cover.



The Marlow

Ensure your outdoor space is usable all year round with the Marlow Canopy.

The Marlow offers versatile outdoor cover, perfect for maximising the use of al fresco dining areas or social seating spaces.

This wall mounted aluminium canopy offers uninterrupted cover from inside to outside and has a retractable PVC coated waterproof fabric roof, and optional fabric side panels, to allow you to provide varying levels of cover to suit the weather conditions: close the roof and any side panels to offer full protection from the rain and the sun, or retract the roof to enjoy the open sky.

Maximum size: 13m x 6.5m





The Kesgrave

The Kesgrave Sail Canopy has a unique shape with leaning posts to create an eye-catching addition to your grounds.

It features an aluminium frame which incorporates a motorized sail system, this allows the sail to retract to form a single roll of fabric, furling diagonally across the centre of the canopy. The waterproof sail is perfectly tensioned at any position, this allows users to conveniently open and close the sail as much, or as little as required.

The Kesgrave is a popular poolside cover solution and is ideal for creating tranquil outdoor shady spots in the grounds of golf clubs, spas, and many other leisure settings.



The Melford

The Melford Canopy features a retractable fabric roof to give users the freedom to close the roof and provide protection from the rain or to open it and enjoy the sunlight.

This aluminium canopy can be installed as a free standing or wall mounted structure, and its simple style suits any environment from a country hotel to an ultra-modern leisure complex.

Transform underused outdoor areas into comfortable social areas that your clients will love.



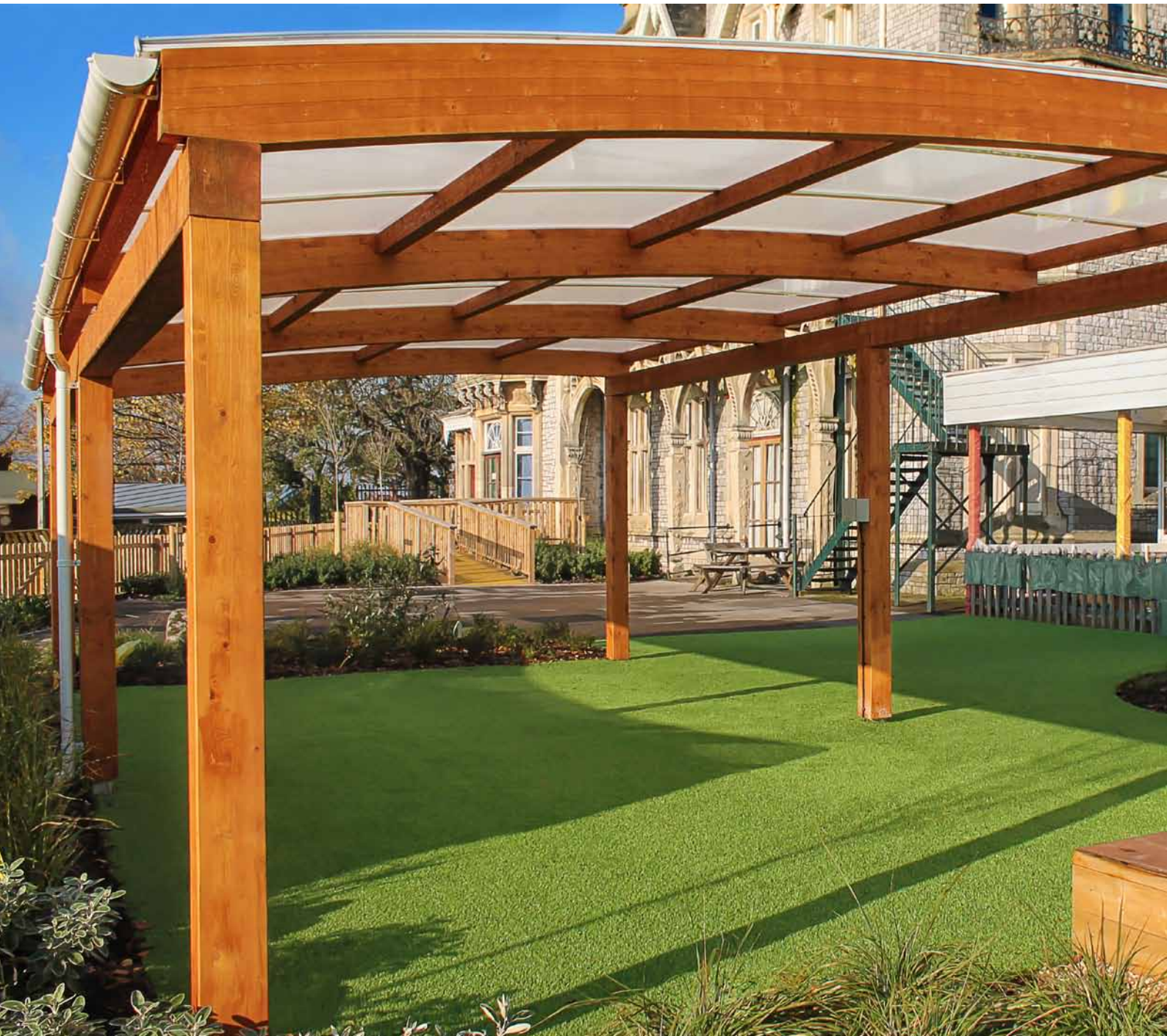
The Highbury

The Highbury Canopy is our largest retractable aluminium canopy, with a maximum size of 13m x 7m per unit.

It is ideal for large open areas, and in particular, busy restaurants which have substantial outdoor dining space.

The retractable PVC coated fabric roof offers high UV protection, and shelter from inclement weather, allowing you to seat your customers outdoors whatever the weather.





These stylish timber structures work perfectly in natural green settings - ideal for providing covered outdoor seating and eating areas at theme parks, holiday parks, golf clubs, sports clubs, and wedding venues.





Tarnhow Timber Canopies

Our Tarnhow canopies are constructed from glue-laminated timber to create stunning tactile structures which add a modern yet natural feel to any environment.

We offer wall mounted and free standing designs, with domed, curved or mono-pitch roofing styles.

All framework is finished with a natural timber stain, for added protection, or you can choose from a wide selection of alternative colours to complement your surroundings.



Steel Free Standing Canopies

We offer a wide range of free standing designs, including our apex roofed Ullswater, and our Welford Dome canopy.

These steel and polycarbonate structures are immensely durable, offering you simple yet stylish cover solutions that are built to last.

All our steel free standing canopies can be powder coated to any RAL colour to match your requirements.

1. The Kensington Dual Pitch canopy is especially popular with hotels and restaurants, with a beautiful gull-wing roof, this canopy adds instant charm to any outdoor setting.









Offer bright and airy outdoor dining and seating space with our Umbrellas. These permanent structures offer durable and long-term outdoor cover solutions, which can be used all year round.

1. Our Double Umbrella can cover an area of up to 19m x 10m

2. Our hugely popular Ulverston Umbrella creates a stunning addition to an outdoor setting.

Umbrellas

Our high quality umbrella canopies are very popular with cafes and hotels that offer outdoor smoking or dining areas, as the umbrella design offers good coverage for shade and shelter yet it does not enclose the user, so the feeling of being outdoors is retained.

We offer a wide range of umbrellas, including our ever-popular Ulverston range, our cantilever Keswick umbrella, and the Dallington square umbrella. All our umbrellas feature tensile waterproof fabric and are supported by strong steel, or stainless steel, frames for high strength and durability.

Umbrellas contd.

We offer 40 fabric colour options with our Umbrellas, including vibrant primary colours, calming neutral colours and stylish metallic finishes.

We can also screen print your logo, or a message onto the fabric, allowing you to advertise your business and bring your indoor and outdoor areas together with your branding.

The framework of our larger umbrellas can be powder coated to any RAL colour to match your branding or setting. Our smaller Ulverston Junior has a stainless steel frame to suit all environments.

1. The Dallington is a square umbrella with fresh, clean lines that will flatter modern environments perfectly.

2. With its cantilever design, the Keswick allows a larger area of cover, with no obstructions.



Whilst most of our umbrellas are installed as permanently open, our Ulverston Junior (shown above and right) can be closed when not in use to preserve its appearance, and also signal when your outdoor area is closed.



The Codale

The Codale's elegant design, with its striking curved roof, offers stylish and effective cover from the weather.

Codale canopies are the perfect solution for protecting customers from the weather in outdoor areas at restaurants, pubs and cafes.

This cost effective shade and shelter structure has a galvanised steel frame, which has 17 colour options. Integral guttering is hidden within the canopy beams and drains down the canopy leg posts.

Its waterproof fabric roof has a high gloss appearance and offers 100% protection from UV rays.

This tensile structure can span up to 15 metres x 15 metres (with the use of a centre post), and due to its modular design, multiple Codales can easily be installed together to create large covered al fresco dining areas.

We also offer the Codale Junior which is a cost effective alternative that still offers the same high quality but has a smaller frame and its own range of fabric colour options.





The Codale creates pleasant outside eating areas that are cool and comfortable during the summer months and offer dry and sheltered areas in poor weather conditions.



The Codale can be fitted with Fabric or PVCu side panels to offer enhanced weather protection - ideal for areas that are more exposed to the weather.



The Codale contd.

The Codale is a popular product with golf clubs, theme parks and visitor attractions, offering cover for visitors during downpours, and shaded seating for picnic areas on hot and sunny days.

The Codale also makes an effective extension to club houses and cafes at sports venues, offering a pleasant outdoor space to eat and socialise, perfect for encouraging your members to stay on and relax at your facility and enjoy some refreshments.

Size: 3m x 3m - 15m x 15m

Framework: Galvanised steel box sections

Roof: 650gsm PVC coated fabric



Waterproof Sail Structures

Simple and elegant waterproof sails that really make a statement. These stunning waterproof shade sails offer so much more than shade and shelter.

The Bexley

With beautiful curved steel posts, the Bexley Sail makes a stunning focal point in natural or urban landscapes.

The Bexley can create cover for up to 36 metres², and is ideal for small courtyards, adventure playgrounds and outdoor dining areas at visitor attractions.

We offer a range of colours for both the posts and sails, allowing you to customise the structure to your environment.





The Tiverton

The Tiverton's smooth, sweeping sail creates a striking architectural feature in any setting.

Similar in style to the Bexley, the Tiverton Sail is more suitable for larger areas due to the addition of tie rods. It is available as a 7m x 7m structure and a 12m x 12m structure.

Fully engineered for year round use, the Bexley and the Tiverton provide protection from the sun and rain, to create cover throughout the seasons.



The Evershade

Achieve the stunning aesthetics and benefits of our Waterproof Sails, at a much lower cost.

Our revolutionary Evershade Sail offers a fresh take on the Shade Sail design, with a simple aluminium framework and a smooth sweeping sail roof.

Due to this unique design, the Evershade is our most cost effective sail structure, and provides an attractive and low cost all-weather outdoor dining solution.





The Belmont

Create large span cover for outdoor events and performances with the Belmont - to ensure the show does go on!

The Belmont offers large span cover ideal for open air performance spaces and bandstands, it also creates a great outdoor socialising or picnic area, particularly for parks and public gardens.

Its saddle shaped roof creates a dramatic architectural statement, yet due to the tactile nature of fabric and the smooth curves, the Belmont blends well into all environments, whether urban or natural.

This canopy is available as a 12m or a 6m structure, and is very popular with holiday parks and hotel resorts as a perfect solution for ensuring open air events and shows can be performed throughout the year, whatever the weather.

Shade Sails

The Able Canopies Shade Sail range offers almost unlimited design and shape potential, allowing you to create a stylish and effective shade solution to suit your setting.

Our Shade Sails offer high UV protection and are ideal for a variety of applications including creating shade for Adventure Playgrounds, Theme Parks and Holiday Parks. They are also ideal for transforming outdoor seating areas into tranquil, shaded spots within hotels, golf clubs and gardens.

Able Shade Sail systems are durable and versatile structures that have been designed specifically for commercial use and are available in a wide range of fabric colours. Our posts can also be powder coated to a choice of RAL colours.

Maximum sail size: 6m x 6m



Our Shade Sails offer great potential within the Sports, Leisure and Hospitality sectors, providing the opportunity to create stunning structures, whilst enhancing the comfort and safety of customers and staff.







Awnings offer cost effective versatile shade over small eating or smoking areas. They can also shade unwanted heat and light from your interior, keeping your building cool on sunny days.





Awnings

Our commercial awnings have been designed to withstand the demands of any hospitality or leisure environment and offer a quick and simple way to create shade for outdoor dining areas.

Choose from our cost effective Darwin open awning, or our Parkhurst cassette awning that offers extra protection to the fabric when the awning is closed.

Both awnings have aluminium frames and are available with a wide range of fabrics, which offer up to 99.9% protection from the sun, and require minimal maintenance due to built-in self-cleaning properties.

Branding can be added to your awning with ease, perfect for advertising your business to passing trade.

Section

02

Covered Entrances & Walkways





Small Door Canopies / Tensile Fabric Walkways / Steel & Aluminium Structures



Small Door Canopies

Our small door canopies offer a wide choice of designs to suit any building, from traditional and decorative to simple and modern.

All of the structures within this exclusive range feature a cantilever design, to offer easy "post-free" access, making them ideal for busy entrance and exit areas.

Constructed from high strength aluminium and covered with solid, high-impact resistant polycarbonate, these canopies are constructed to the highest quality finish and designed to withstand the demands of any commercial setting. They also make great wall mounted walkway cover, due to their unlimited length capability, ideal for creating cover around a building's exterior or above an outdoor stairwell.

Offer customers and visitors a dry entrance into your building, and help to keep your doorway slip free and clear of debris. Alternatively, these canopies are perfect for creating a simple wall mounted covered walkway around your building.





The Whiteside

The Whiteside has a simple curved design, which suits all building shapes, and with a maximum span of 4m x 4m it creates a spacious and welcoming entrance for customers and visitors.

The Whiteside reduces the amount of rain walked into your building ensuring the entrance is presentable, dry, and free of dirt, this also minimises slip hazards which is vital for busy buildings such as leisure and sports centres.

The Whiteside can be wall mounted or free standing to suit your needs and can also double up as a waiting shelter.





Tensile Fabric Walkways

Link buildings and provide stylish cover over walkways with our Tensile Fabric Walkways.

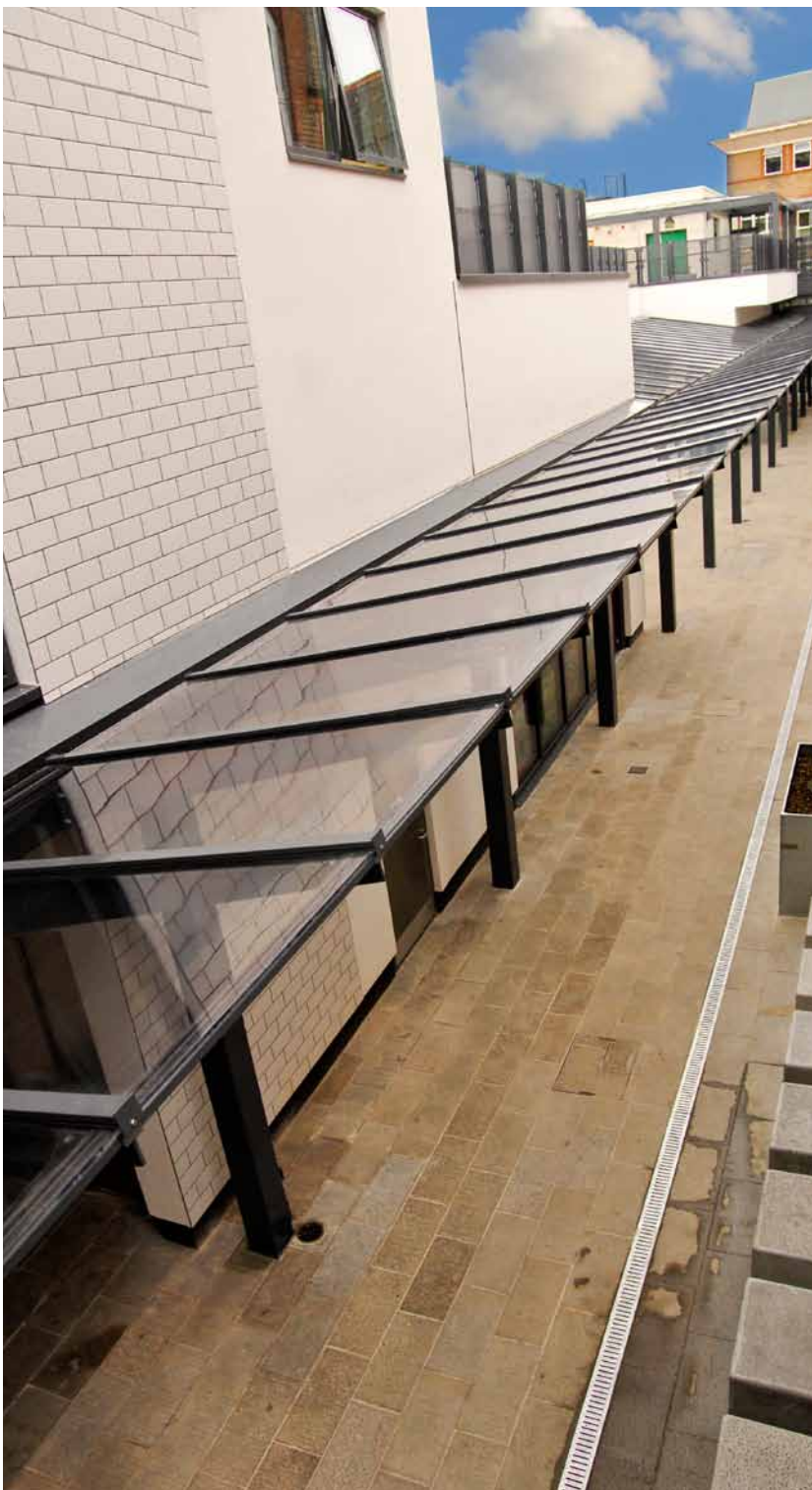
We offer a wide range of Tensile Fabric Walkways to suit all budgets and settings, from the simple, understated wall mounted Colne Walkway to the impressive cantilever Kendal Walkway.

All offer exceptional protection from the weather due to their robust waterproof tensile fabric roofing and durable steel framework.

The steel framework and fabric roofing is available in a wide variety of colours, allowing you to choose colours to match your surroundings or evoke a desired environment, from calming and tranquil to vibrant and dynamic.



Our Tensile Fabric walkway range includes wall mounted and free standing designs. With attractive waterproof fabric roofing, these walkways enhance your guests comfort when moving around your site.



The Kensington Range

The Kensington canopy range features a stunning selection of luxury steel canopies that can be covered with a choice of glass or polycarbonate roof panels.

You can also choose to have glass solar panels fitted to all or part of the canopy, to allow you to generate renewable energy whilst also providing shade and shelter to your customers.

Our Kensington range includes wall mounted and free standing structures with mono-pitch and dual-pitch designs.

This high-end canopy range creates a spectacular, high quality finish to any building, fitting in effortlessly with new builds and adding a contrasting contemporary look to existing buildings.

Popular with hotels and spas, our Kensington canopies create stunning entrance areas and covered walkways that reflect the high quality finish of luxury establishments.



The Coniston

The Coniston Wall Mounted Canopy offers cost effective entrance and walkway cover, with a clean and modern profile.

Constructed from 100% aluminium and with 35mm structured polycarbonate roof panels, the Coniston offers exceptional durability and has a life expectancy of 25 years.

It can be installed to any length, and can project up to 6 metres from the wall, allowing you to create a large entrance canopy or walkway that offers excellent shelter from the weather.

This versatile design incorporates hips and valleys to allow the structure to adapt to building shapes, obstacles and corners; and with the addition of side fills, you can create a more enclosed walkway or entrance area to provide enhanced weather protection.





Big Span Steel Structures / Wall Mounted Canopies



Section

03

Sports & Spectator Canopies

The Hamilton

Encourage year-round use of your outdoor sports facilities with a canopy.

We offer a wide range of free standing canopies which can provide excellent cover for outdoor sports areas. In particular our Big Span Hamilton canopy offers cover for very large areas - with a span of up to 11 metres, and an unlimited length.

A popular application for the Hamilton is outdoor gym cover; often these areas can lie unused in bad weather as the rain can make the equipment slippery and uncomfortable to use. A Hamilton canopy creates a spacious and airy outdoor gym that can be used in wet weather.

The Hamilton also offers UV protection on sunny days whilst also helping to keep those underneath cool whilst using the equipment.



The Coniston

Our versatile Coniston wall mounted canopy provides excellent cover for spectators at sports clubs and events.

Due to its wall mounted design it offers seamless cover from inside to out, perfect for extending club house spectator areas.



1. Due to its large projection of up to 6 metres the Coniston is also a cost effective solution for Outdoor Gym cover.

2. A Coniston spectator canopy at Bradley Bowling Club in Clwyd.

The addition of a Coniston spectator canopy offers protection from the sun to those watching play. It also offers shelter to everyone in a heavy downpour, helping to prevent water or mud being walked into your club house.



Section

04

Cycle Parking Solutions





Cycle Shelters / Cycle Compounds

Cycle Parking Solutions

Offering secure cycle parking at your venue helps to make customers who cycle feel valued, and ensures their bikes are kept safe and dry whilst they enjoy your facilities.

We offer a wide range of cycle parking solutions from smaller shelters such as the Grasmere, up to large lockable compounds.

Timber Shelters

Our Timber Shelters, are ideal for parks and green areas as, due to their timber frames, they have a softer visual impact on their surroundings and blend in well with natural settings.

These shelters are constructed from sustainably sourced Glulam timber and have a naturally smooth finish with stunning curved frames to really catch the eye.



1



2

1. The Denver Timber Shelter

2. The Pembroke Timber Shelter

The Grasmere Timber Clad Shelter

The Grasmere Timber Clad Shelter is a contemporary cycle shelter which features timber cladding, galvanised steel and a corrugated iron roof for an industrial look and feel.

It is ideal for small areas as it has a standard size of 4.1m x 2.05m and can be extended in 2m bays if a demand for additional covered cycle parking is required in the future.





The Langdale

The Langdale is the perfect solution for those that require cycle parking cover on a larger scale.

The cycle hoops allow for double sided parking and are accessible from both sides of the shelter making it ideal for busy, well used environments such as visitor attractions and sports centres.

If your need for cycle parking grows after installation, extensions can be added to the shelter without any drilling or welding onsite.



The Witton

The Witton range of cycle shelters have eye catching designs that suit modern, urban settings and are popular with gyms and leisure centres.

The Witton Wall Mounted Cycle Shelter takes up minimal space and is ideal for those that require cycle parking for a small amount of bicycles, whilst the Witton Free Standing Cycle Shelter can hold up to 20 bicycles, making it ideal for larger sites.

The Witton's unique design ensures your cycle parking will stand out, and be spotted easily by cyclists.



1. The Free Standing Witton Cycle Shelter

2. The Wall Mounted Witton Cycle Shelter

1



2



Provide the ultimate protection for your customers' bicycles with a cycle compound. Up to 20 bikes can be stored in our standard sized compounds, however these can be extended as required to accommodate your site's needs.

1. The Easydale Cycle Compound

2. The Witton Cycle Compound

Cycle Compounds

Our cycle compounds are supplied with secure lockable steel gates enabling you to offer exclusive cycle parking for your members or guests.

They are also great for storing bikes that are hired out to customers, keeping all bikes safely and securely locked away, and protected from the weather.

These secure compounds increase security on your site, helping to prevent bikes thefts and vandalism, and are extremely popular with holiday parks and attractions that offer bicycle hiring facilities.



Head Office

9 - 10 Faraday Close
Gorse Lane Industrial Estate
Clacton-on-Sea
Essex CO15 4TR

South East Office

11 Friars Way
Dover
Kent
CT16 2DH

Central Office

Ashford House
173 Ashford Road
Bearsted, Maidstone
Kent ME14 4NE

Wales Office

305 Barry Road
Barry
Vale of Glamorgan
CF62 8BJ

0800 389 9072
www.ablecanopies.co.uk

