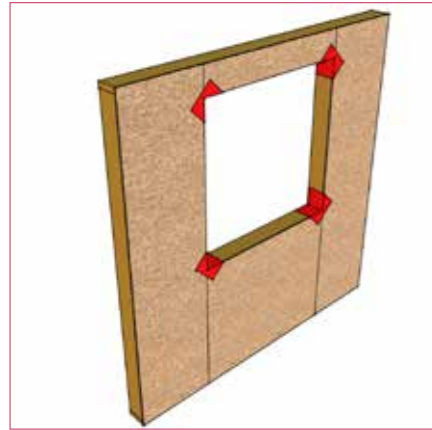
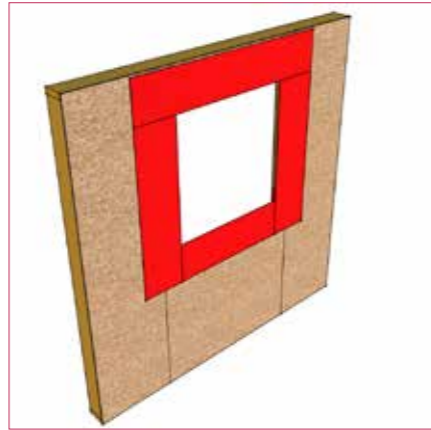


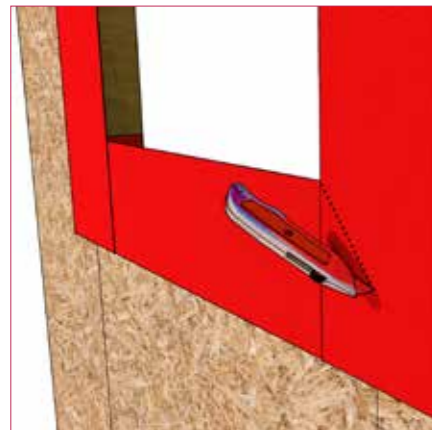
12 WINDOW INSTALLATION



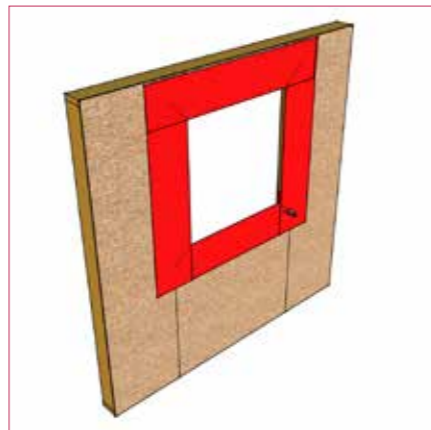
1 Place tape section into each corner creating seal and fold over external face.



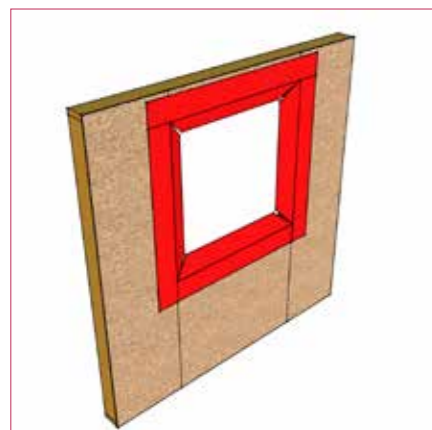
2 Fix Wraptite Tape, so upper pieces overlap lower. Position tape so half width is adhered to substrate, and half is free in void.



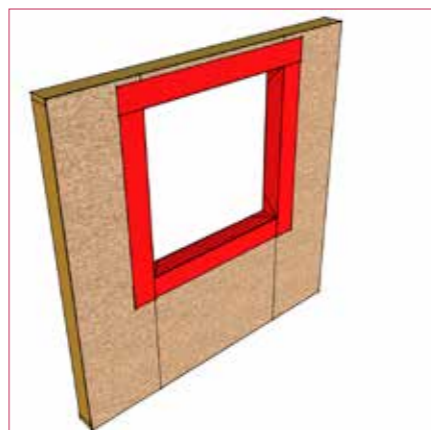
3 Cut tape at 45° angle, from corner towards centre.



4 Window system with cut corners.



5 Firmly press tape into window reveal.



6 Finished window installation using Wraptite Tape.

Call our Technical Department

The A. Proctor Group has a dedicated Technical Department which can deal with installation details, view drawings for approval and give specialist advice on the correct use of the A. Proctor Group products.

For Technical Advice on installation details and product applications contact the A. Proctor Tecline:

Telephone

+44 (0) 1250 872261

Facsimile

+44 (0) 1250 872727

Email

wraptite@proctorgroup.com



Scan here to download installation video

See installation video -
www.proctorgroup.com/products/condensation-control/wraptite-sa

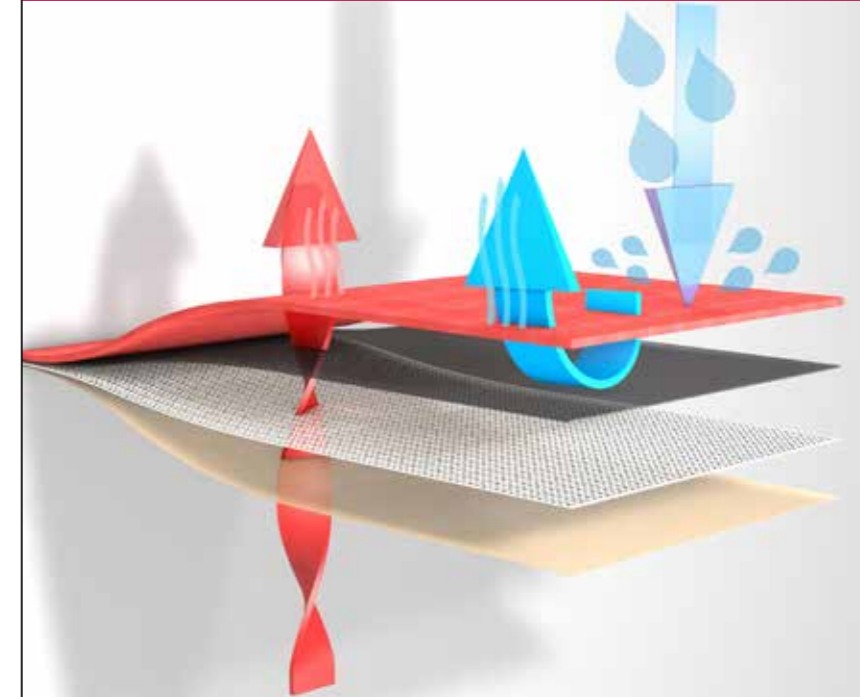
For more information contact us:

+44 (0) 1250 872261
www.proctorgroup.com



CONDENSATION CONTROL

Wraptite-SA



INSTALLATION GUIDE



1 OVERVIEW

- Wraptite-SA (Self-Adhered) is an externally applied, fully adhered Weather Resistant Barrier/Air Barrier membrane.
- Building design requirements should be considered prior to application of Wraptite-SA to minimise waste; penetrations/openings will need to be correctly detailed to ensure a weather and air tight installation.
- Wraptite-SA can be installed in either a vertical or horizontal orientation.
- Membrane is easily cut to the desired length.
- Always install with an overlap, with the upper courses lapped over lower courses.
- All penetrations including windows and doors must be installed in proper sequence to ensure a shingled result.
- All overlaps must be a minimum of 75mm on both horizontal and vertical laps.
- Internal and external vertical corners should have a minimum overlap of 150mm.
- Vertical laps should be staggered from floor to floor, or separated by a Wraptite-SA horizontally applied strip.
- Wraptite-SA should only be applied in dry weather when air and surface temperatures are above 0°C.
- Wraptite-SA must not be applied in areas where it will be permanently exposed to UV rays and must be covered within a reasonable amount of time, not exceeding 120 days.

2 SUBSTRATE PREPARATION

- Substrate condition is critical to the adhesive performance of any adhered membrane.
- Surfaces must be clean, dry and free of any contaminants, sharp protrusions or other matter that may hinder the adhesion of the wall membrane installation. Clean any loose dust or dirt from the wall membrane by wiping with a dry cloth or brush.
- Wraptite-SA can be applied to various substrates including:
 - > Aluminium (Painted or Mill Finish)
 - > Anodised Aluminium
 - > Concrete Block
 - > Exterior Grade Gypsum / Fibre Board
 - > Galvanised Metal
 - > In-Situ Concrete
 - > OSB
 - > Precast Concrete
 - > Pre-Painted Steel
 - > Rigid Vinyl
 - > Steel
 - > Plywood

PRIMER IS NOT REQUIRED

3 ADHESIVE CURING TIME

- Curing time is approx. 6 hours.
- Depending on local weather conditions, full adhesion time may vary.

4 INSTALLATION PRACTICES

- Keep Wraptite-SA in the original packaging which also functions as a dispenser.
- Cut membrane into easily handled lengths as required.
- Apply membrane either horizontally or vertically.
- To achieve best performance, we advise use of a roller or firm brush to ensure a continuous and effective bond with the substrate.
- During the installation process, at the end of each work day, protect the leading edge from water intrusion with temporary tarp to ensure liquid water does not seep behind the membrane.
- For a period of exposure exceeding 120 days, a tarp should be used to protect the membrane from weather conditions.
- Do not install Wraptite-SA in adverse weather conditions.

- In keeping with good practices, all walling and roofing membranes should be protected from extreme weather conditions such as heavy or prolonged rainfall. Additional waterproofing materials (e.g., tarps) should be utilized during the construction process to ensure that all leading edges and interiors are protected until the primary cladding material is applied.

5 HORIZONTAL INSTALLATION (TWO PERSON METHOD)

1. Snap chalkline for guidance.
2. Pre-cut material to required length.
3. Roll cut length with release paper outwards.
4. Starting at corner, peel back release paper by approx 150mm.
5. Fold release paper back, and using hand roller or stiff brush, lightly apply the exposed glue surface to the prepared substrate.
6. Starting in the middle, use hand roller or stiff brush to smooth out any air bubbles, releasing the air to each side.

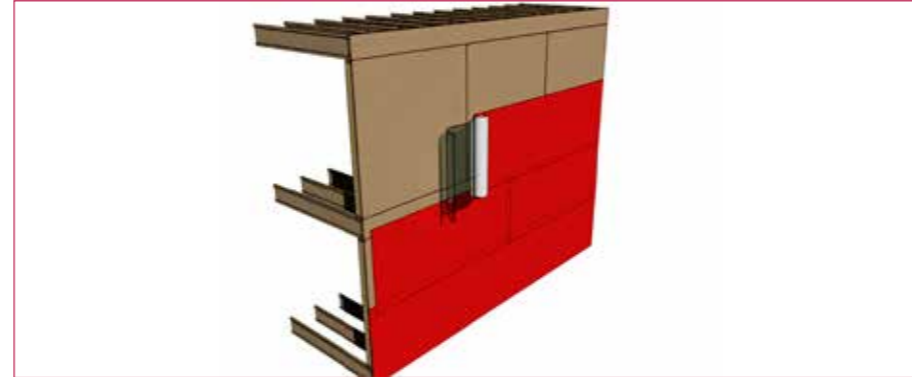


Diagram showing staggered lap of horizontal installation of Wraptite-SA

6 VERTICAL INSTALLATION (SINGLE PERSON METHOD)

AS ABOVE POINTS 1-5

6. Allow rest of rolled up material to drop down - with release paper still attached. Check for proper alignment.
7. When aligned, use hand roller or stiff brush across the entire adhered section.
8. Drop roll down, pulling off release paper.
9. Smooth out air bubbles with stiff brush / roller.
10. Proceed with next row, ensuring minimum 75mm overlap, always in shingled fashion.



Diagram showing staggered lap of vertical installation of Wraptite-SA

7 STORAGE AND HANDLING

- Must be protected from rain and physical damage.
- Pallets of Wraptite-SA must not be double stacked.
- Membrane to be stored allowing adequate ventilation.
- Must not be stored in temperatures exceeding 32°C for extended periods.
- Must be stored in a dry area away from heat, flames or sparks.
- Rolls must be stored vertically.
- Store only as much material at point of use as is required for each day's usage.
- 72 month shelf life.

8 TECHNICAL SERVICE

Support is provided by technically trained personnel, backed by a central research and development services staff.

9 TOOLS REQUIRED

- Utility Knife
- Stiff Brush
- Marker Pen
- Measuring Tape
- Rubber roller

10 PIPE INSTALLATION



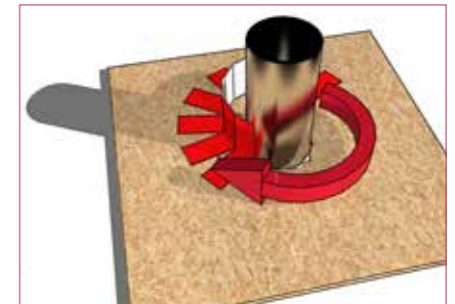
Pipe penetration with airgaps around pipe



Measure and cut tape detail to suit pipe



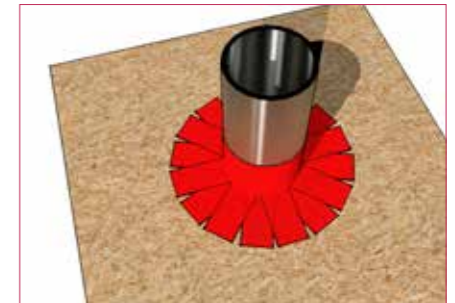
Remove release liner from pre-cut strip



Wrap tape detail around pipe

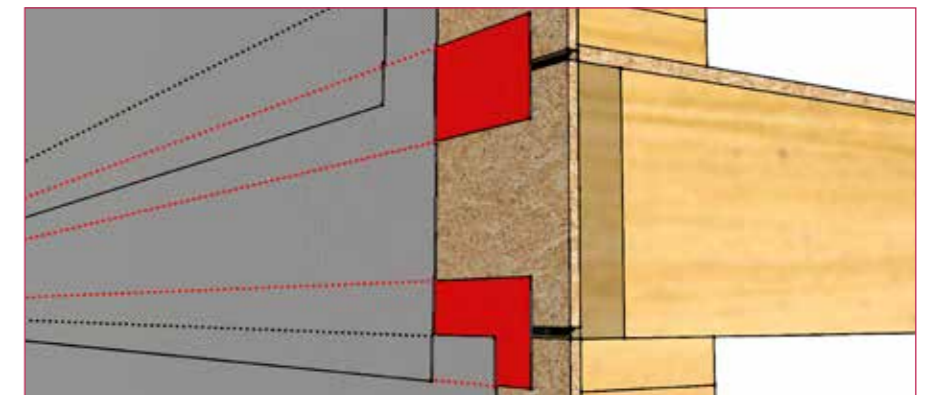


Firmly press tape to substrate



Second tape detail seals all air-gaps

11 FLOOR JUNCTION PERIMETER



Detail showing how Wraptite Tape can be utilised to make floor junctions airtight