

# Thermal Laminates

## THERMAL INSULATION

### DESCRIPTION

As the first manufacturer in the UK of Thermal Laminates, and with over fifty years' experience the A. Proctor Group continue to provide the construction industry with a range of Thermal Laminates to suit most applications.

With the increase in thickness required to meet the current Building Regulations, Thermal Laminates both thick and thin are being specified in a variety of refurbishment and new build projects throughout the UK.

The A. Proctor Group's range of laminates includes Plusboard and Plusfloor which comprise of the following:

### KEY FEATURES

- Extruded Polystyrene (XEnergy) - K Factor 0.031 W/mK

To finishes such as:

- Chipboard
- Plywood
- Plasterboard
- MgO

### ADVANTAGES

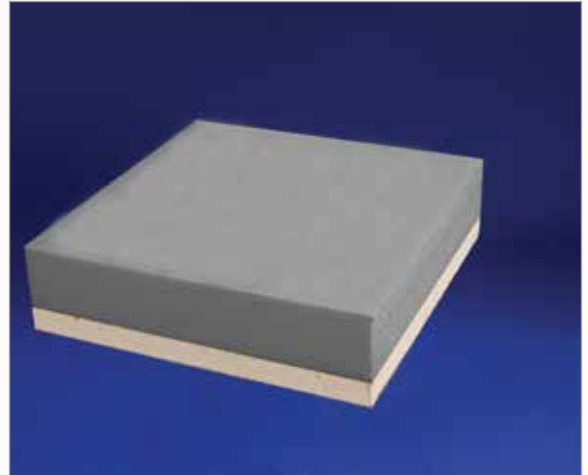
- Designed for both refurbishment and new build projects
- Can be used in floors, walls and roofs
- Simple, effective solution to reduce heat loss

### PHYSICAL PROPERTIES

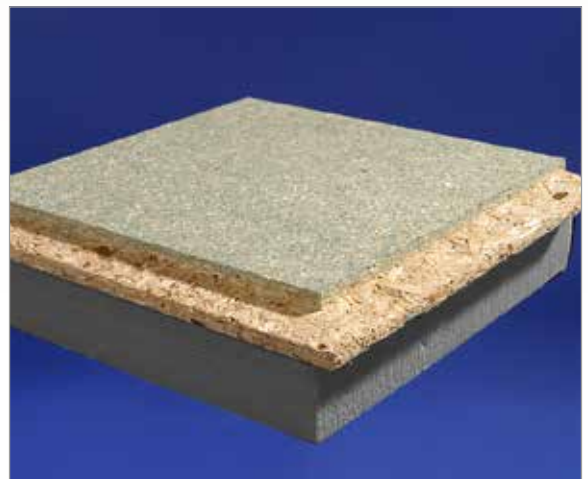
Physical properties of products are dependent on the thickness and facings of product chosen to suit individual requirements.

### TECHNICAL SERVICES

The A. Proctor Group has a dedicated Technical Department which can deal with installation details, view drawings for approval and give specialist advice on the correct use of the A. Proctor Group products. The service also includes U-Value calculations and Condensation Risk Analysis'. This computer analysis allows the specifier or contractor to view where, if any, condensation risks would be and whether this will cause potential problems in a given roof or wall construction on any particular project.



Plusboard



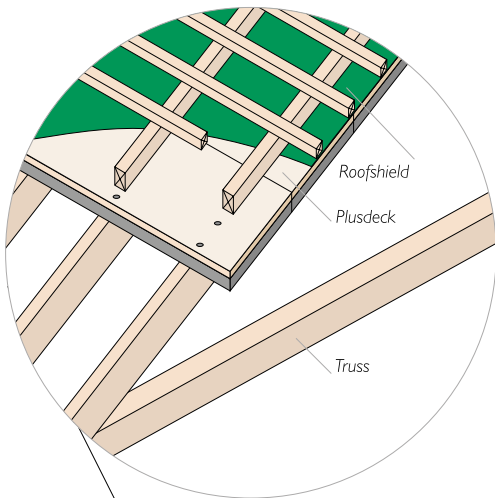
Plusfloor

PROPERTIES (units)	XENERGY LBH
Min Density (kg/m <sup>3</sup> )	33
Thermal conductivity (W/mK) (90 days at 10°C)	0.031
Compressive Strength (kN/m <sup>2</sup> ) <sup>†</sup>	300
Maximum continuous operating temp (°C)	75
Water Absorption (Vol %)	1.5%
Dimension - Thickness (mm)	greater than 10mm
Tolerance (mm)	± 0.5

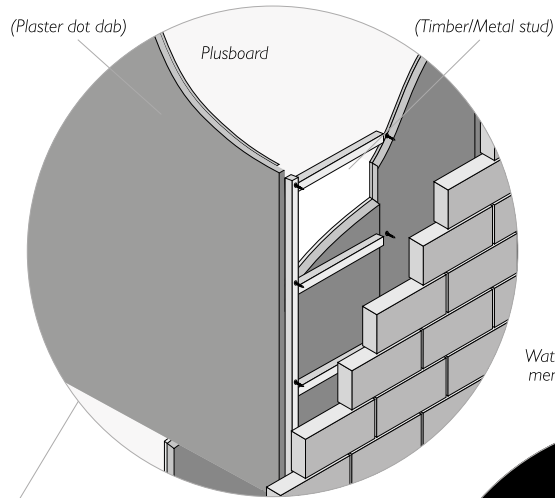
<sup>†</sup>At yield or 10% deflection (whichever comes first) minimum value.

# Thermal Laminates

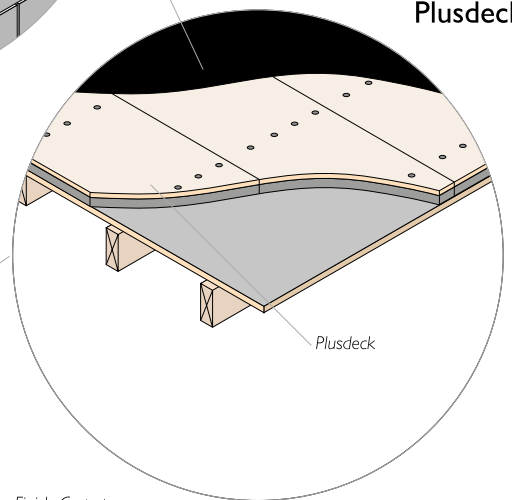
## Plusdeck



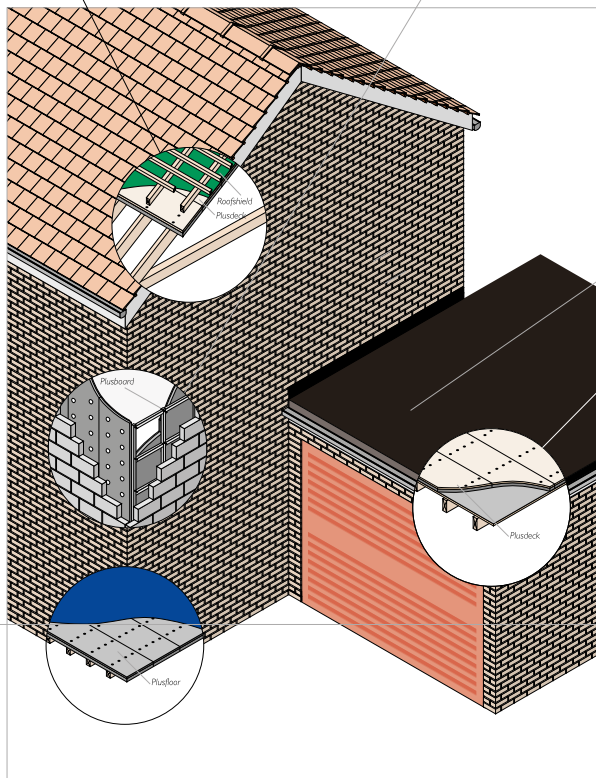
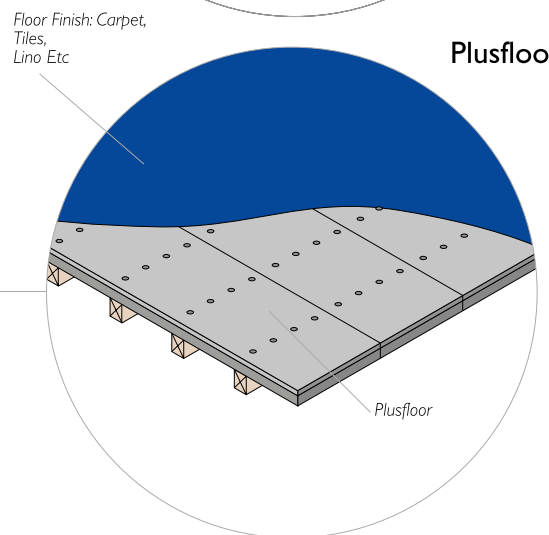
## Plusboard



## Plusdeck



## Plusfloor



Download a brochure from our website...  
[www.proctorgroup.com](http://www.proctorgroup.com)

contact@proctorgroup.com | +44 (0) 1250 872261

Revised July 2018

