

# Protech GM+

GAS PROTECTION

## • LOW RISK CHARACTERISTIC SITES •

### REGULATIONS COMPATIBILITY TABLE

|                   | CIRIA 665<br>CHARACTERISTIC<br>SITUATION 2 | CIRIA 665<br>CHARACTERISTIC<br>SITUATION 3-6 | BS8485<br>CHARACTERISTIC<br>SITUATION 2 | BS8485<br>CHARACTERISTIC<br>SITUATION 3-6 | BRE 211<br>RADON | NHBC<br>AMBER 1 | NHBC AMBER 2<br>& RED |
|-------------------|--|--|---|---|------------------|-----------------|-----------------------|
| METHANE           | N/A  | N/A  | N/A                                     | N/A                                       | N/A              | ✓               | N/A                   |
| CARBON<br>DIOXIDE | ✓  | ✓  | N/A                                     | N/A                                       | N/A              | ✓               | N/A                   |
| RADON             | N/A  | N/A  | N/A                                     | N/A                                       | ✓                | N/A             | N/A                   |

\* Please contact the A. Proctor Group's technical department for suitability on these sites

### DESCRIPTION

Protech GM+ is a high performance proprietary reinforced gas barrier, that has been specifically designed to conform with the latest guidance documents. Due to its unique composition the membrane is extremely robust and flexible and therefore easy to install on site. The membrane also provides protection from damp and, therefore, there is no need to install a separate DPM.

### SPECIFICATION

Ciria 665, BS8485 & Local Authority Ground Gas Handbook recommended that gas membranes are specified on the basis of the 'need to survive' construction, i.e. use one that is puncture and tear resistant.

Thickness should not be the main determinant of the suitability of a membrane for a particular site, although it can indirectly influence some key performance parameters.

In practise, because of the nature of construction sites, the durability, survivability and robustness of membranes are equally important than purely permeability to gas.

Protech GM+ incorporates a reinforced grid to ensure that maximum protection is achieved when installed to manufacturers' instructions.

The need for high quality workmanship during installation should not be under-estimated. The health and safety of the occupants of the building is dependent on its satisfactory performance. If installed incorrectly or damaged during the construction process, the membrane is rendered ineffective and will fail to provide adequate protection against the ingress of ground gas or vapours.



#### TYPICAL PROPERTIES

|  |  |
|--|--|
| Roll Length  | 50m  |
| Width  | 2m   |
| Weight   | 0.29kg/m <sup>2</sup>                              |
| Thickness  | 0.4mm  |
| Colour   | Yellow   |
| CO <sub>2</sub> Permeability<br>BRE Gas<br>Chromatograph | 0.06 g/m <sup>2</sup><br>31 ml/m <sup>2</sup> /day |
| Methane Permeability<br>BS ISO 15105-1:2007              | 256ml/m <sup>2</sup> /day/atm <sup>-1</sup>        |
| Radon permeability                                       | 1.1 x 10 <sup>-1</sup> m <sup>2</sup> /s           |

### REQUIRED ACCESSORIES

- Protech GM+ Starter Band (1m x 50m)
- Protech GM Tape
- Protech GM Tophats
- Protech SAGM (Self Adhesive Gas Membrane)
- Protech GM Flashing Strip
- Protech GM+ Corner Units
- Protech GM Primer
- Protech GM 3mm Protection Board
- Protech GM Protection Fleece

### VENTING

On sites where venting is required, our Provoid Venting System should be used. We can provide design advice for both passive and active venting systems to suit individual site requirements.

# Protech GM+ Starter Band

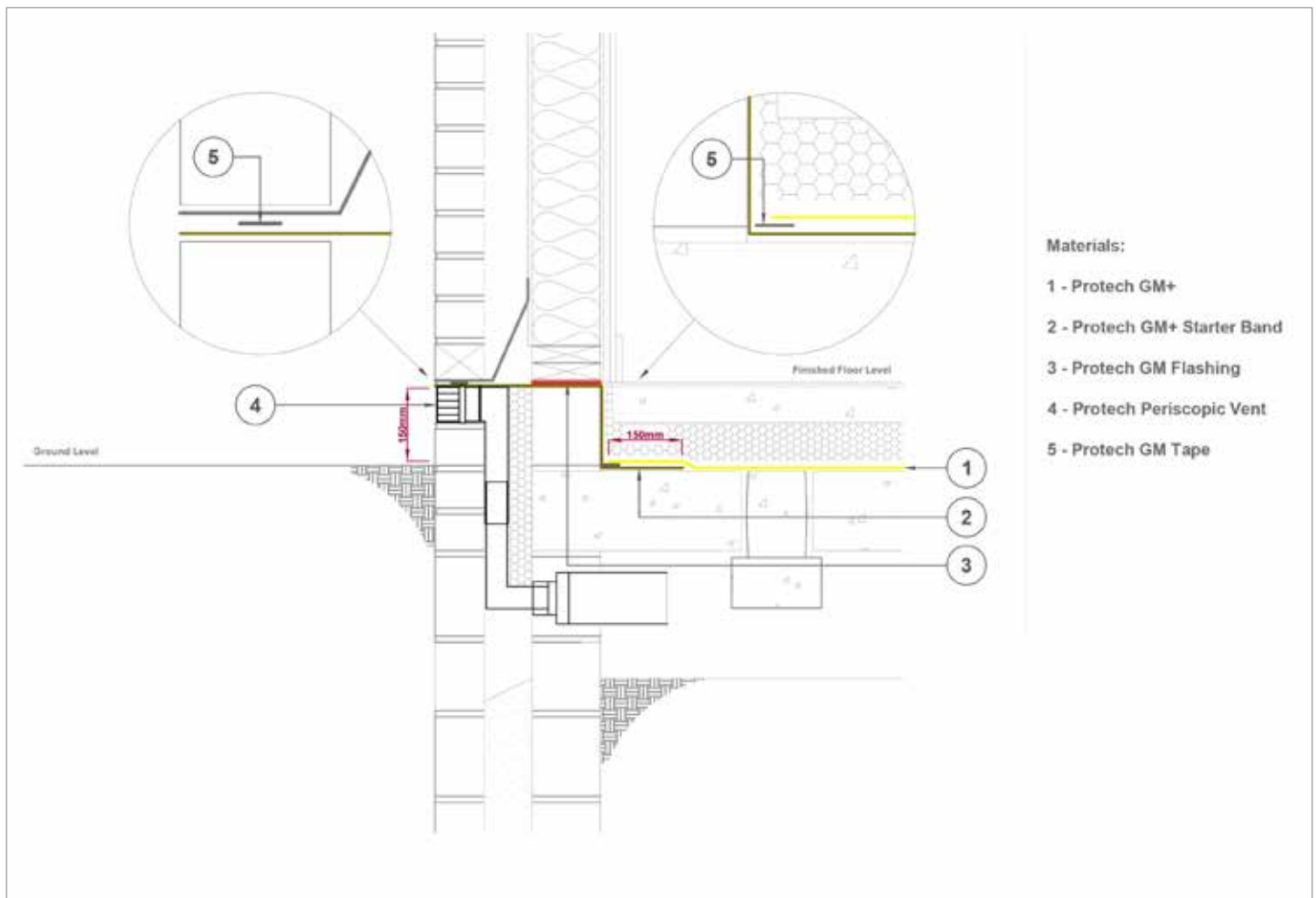
GAS PROTECTION

## DESCRIPTION

The Protech GM+ Starter Band has a dual function, to provide a continuous barrier to gas which is then linked in with the horizontal gas membrane and it will also function as a DPC within the wall.

The Starter Band goes through the cavity with an architectural DPC or cavity tray which should be fixed with Protech GMTape in order to stop a creation of a slip plane.

On a solid wall internal wall construction there is no requirement for any additional DPC or protection to the Starter Band. When used in a cavity wall a separate cavity tray or architectural DPC is recommended to protect the spanning section of the Starter Band from damage from mortar spots and other debris created during construction. This cavity tray would be installed in the same course and fixed to Protech GMTape again to prevent a creation of a slip plane.



Download a full Gas Protection brochure from our website...

[www.proctorgroup.com](http://www.proctorgroup.com)

contact@proctorgroup.com | +44 (0) 1250 872261

Revised June 2018



**Proctor**  
Group