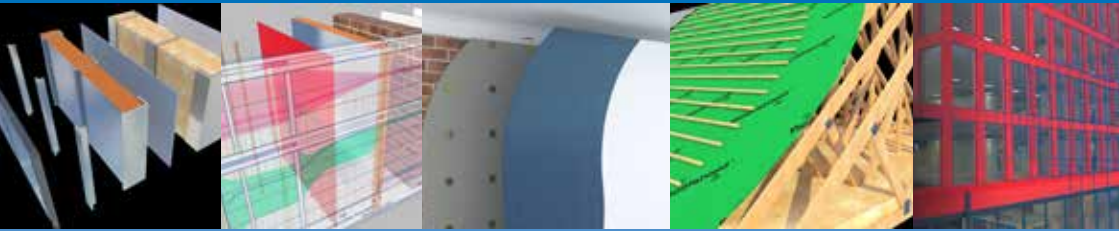


Product Guide

A GUIDE TO A. PROCTOR GROUP PRODUCTS & SERVICES





SOLUTIONS BUILT ON KNOWLEDGE

We have been serving the construction industry for nearly 50 years with an extensive portfolio of technically advanced thermal, acoustic and membrane products. We provide a wide range of high quality, innovative solutions which are designed to meet the continuously evolving requirements of the construction industry.

This unique diversity gives us the ability to consider buildings holistically, and hence to develop systems that complement each other across a wide range of sectors.

Our close links with the industry, both academics and construction professionals, combined with our broad in house knowledge base gives us the ability to innovate, anticipate and create in whichever sectors we choose to compete.

In association with:



CONDENSATION CONTROL

04

EXTERNAL AIRTIGHT BARRIERS

08

ACOUSTIC FLOOR SOLUTIONS

10

GROUND GAS PROTECTION

14

THERMAL SOLUTIONS

16

SPECIALIST SERVICES / TECHNICAL SUPPORT

20

CASE STUDIES

21

Our goal is growth and profit, through continuous improvement & development of our service and product range. All employees play an important part in this process and will share in our success.

Mission statement



CONDENSATION CONTROL

We have been at the forefront of developing breather membrane technology for more than twenty five years.

We have an excellent reputation for supplying both quality products and customer service.

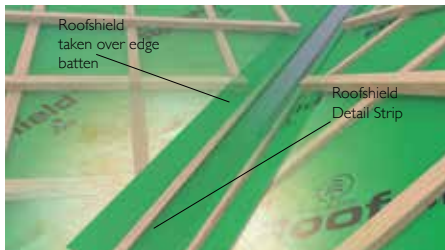
MOST PRODUCTS ARE MANUFACTURED IN THE UNITED KINGDOM.

A PORTFOLIO OF 3RD PARTY APPROVED PRODUCTS PROVIDING UNIQUE FEATURES AND BENEFITS.

TECHNICAL SERVICES INCLUDING U-VALUE CALCULATIONS & CONDENSATION RISK ASSESSMENT FOR INDIVIDUAL PROJECTS.

NATIONAL TECHNICAL AND COMMERCIAL TEAM TO QUICKLY RESPOND TO ENQUIRIES INCLUDING SITE VISITS.

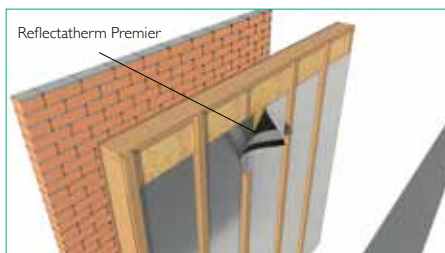
PRODUCT PRESENTATION ON 'CONDENSATION IN THE ROOFSpace'.



ROOFSHIELD® DETAIL STRIP

Roofshield Detail Strip has been developed to aid installers in the laying of Roofshield and to allow efficient and cost effective installation in areas where a full width of Roofshield is not economical or required to be used such as valleys, hips etc. It is also ideal to use on small areas of roof such as dormers where handling a full sized roll could be problematic.

- Allows efficient and cost effective installation
- Ideal for small areas of roof
- BS5534 Compliant
- Vapour & Air permeable



REFLECTATHERM PREMIER

Reflectatherm Premier is a reflective vapour control layer with integrated tape for ease of installation. Reflectatherm Premier is for internal walls, ceilings and floors, specifically designed to enhance the thermal performance when placed on the warm side of the insulation.

- Integrated Tape reduces requirement for additional tapes on site
- Faster installation than using separate tapes
- Reduction in labour and time costs
- Improved adhesive bond between membrane and Integrated Tape
- Improved Vapour Resistance due to Integrated Tape
- R value of 0.78 m²K/W when used with a minimum 19mm service cavity
- High vapour resistance



Roofshield®

Industry tried, tested and trusted

Roofshield® is a unique vapour and air permeable pitched roof underlay which allows vapour to escape - but also allows air in – reducing the risk of condensation.

- BS5534 Compliant
- Vapour & Air permeable
- Water Resistant
- No VCL required
- No ridge ventilation required
- Roll size: 1m x 50m & 1.5m x 50m, weight 185gsm
- Colour: green printed top layer and white underside



REFLECTASHIELD TF 0.81

Reflectashield TF 0.81 is a high performance breather membrane specifically designed to enhance the thermal performance of timber and steel frame structures.

- R value 0.81 as tested by NPL
- Complies with BS EN 13859-2:2010, TRADA & NHBC requirements
- Competitively priced
- Enhanced foil surface
- Unique patented three layer composition
- Roll size 1.45mx50m, 2.7mx100m & 2.9mx100m.
Weight 134 gsm
- Colour reflective silver top layer & white underside
- BM Trada certified
- Class E Reaction to Fire



REFLECTATHERM PLUS

Reflectatherm Plus is a reflective, high resistance vapour barrier for internal walls, ceilings and floors, specifically designed to enhance the thermal performance when placed on the warm side of the insulation.

- High vapour resistance
- Improved airtightness
- Improved thermal resistance
- Helps to meet the requirements of Part L in England and Wales, Section 6 in Scotland
- Roll size: 1.5mx50m, 2.7mx100m & 3mx100m.
Weight: 150 gsm
- Colour reflective & black
- BM Trada certified
- Class E Reaction to Fire





PROCHECK® 125

Proccheck 125 is a lightweight reinforced polyethylene vapour barrier which can be utilised in a variety of commercial applications. Proccheck 125 can be utilised where very high moisture vapour resistance is not a necessity but a strong, durable airtight membrane is.

- Low / Medium Risk Applications eg. infrastructure, light commercial buildings
- Vapour Resistance 126 MNs/g / Sd 25m
- Reinforced
- Roll size; 2m x 50m. Weight 90 gsm



PROCHECK® STANDARD 300

A lightweight reinforced polyethylene vapour control layer for use within roof and wall constructions to prevent warm, moist air escaping from inside the building and condensing within the insulation. The woven polypropylene multifilament scrim reinforcement provides good resistance to tears and punctures.

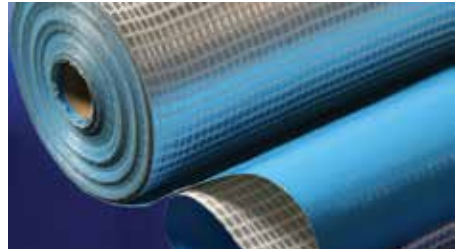
- Low Risk Applications eg. Heated warehouses
- Vapour Resistance >300 MNs/g / Sd 64m
- Reinforced
- Roll size; 2m x 50m. Weight 151gsm



PROCHECK® PREMIER 500

A strong reinforced polyethylene vapour control layer with good vapour resistance. The woven extruded polypropylene multifilament scrim reinforcing provides improved nail tear resistance.

- Vapour Resistance >500 MNs/g / Sd 100m
- UV stabilised
- Low/Medium Risk eg offices, school, houses
- Roll size; 2m x 50m. Weight 238 gsm

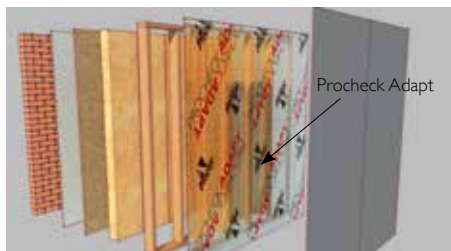


PROFOIL 861

A heavyweight reinforced vapour control layer with aluminium foil core to give a high water vapour resistance. The aluminium foil is protected on both faces by polyethylene for corrosive situations, such as chlorine in swimming pools.

- Vapour Resistance > 7000 MNs/g / Sd 1700m
- Unaffected by chlorine
- Aluminium Foil
- High Risk - eg Swimming Pools, Textile Factories
- Roll size 2m x 50m. Weight 310 gsm
- Colour; Blue (top) Reflective silver (bottom)





PROCHECK® ADAPT

Procheck Adapt is a high performance variable-permeability vapour control layer with integrated lap tape for use in a variety of commercial and residential applications. It is designed to protect the building fabric from potential risks of condensation and it will also act as an airtight barrier.

- Variable permeability adapts to changes in humidity
- Wide Sd range guarantees performance in demanding climatic conditions
- Ensures effective drying out of building materials
- Suitable for variety of commercial and residential applications
- Provides airtightness to structure as well as vapour control
- Roll size 1.5m x 50m. Weight 110 gsm



FIRESHIELD®

Fireshield is a vapour permeable walling underlay with fire proof surface. Fireshield is suitable for all walling applications including those in multiple storey buildings. Its unique coating doesn't just resist fire, but eliminates fire spread.

- Unique composition actively reacts to prevent fire taking hold
- Vapour permeable walling underlay for use either directly onto sheathing or insulation
- Class B, s1-d0 but performs differently to other similar class products
- Complies with BS5250, BS4016 & NHBC requirements for vapour permeable walling underlays
- Ideal for use in rainscreen / façade construction
- Suitable for applications over 18m high



FAÇADESHIELD® UV

Façadeshield UV is designed specifically to ensure the building fabric maintains good water resistance and breathability behind open jointed cladding.

- For use under open jointed façades
- UV-stabilised
- Easy to cut
- Anti-glare
- Permanent long life under façades with up to 50mm wide joints
- Air tight yet highly vapour permeable
- Highly water resistant
- Robust with good tear resistance and tensile strength
- Roll size 1.4m x 50m. Weight 220 gsm
- Class B Reaction to Fire



FRAMESHIELD 100

Frameshield 100 is a wall breather membrane. It can be used behind brickwork, rain screen cladding, vertical tiling, timber cladding and other closed jointed cladding materials or systems.

- Low vapour resistance
- Colour: grey or green
- Special sizes, corporate colour & printing available on request
- Class W2 in accordance with BS EN 13859-2:2010
- Roll size 1.4m, 1.5m or 2.7m wide x 100m long
- Weight 100 gsm



EXTERNAL AIRTIGHT BARRIERS

Our range of Wraptite® external air barriers solve the problem of reliably achieving airtightness in buildings, with a robust two component solution. This new approach saves on both the labour and material costs associated with meeting the demands of modern energy efficiency requirements in both commercial and residential buildings.

Moving the air barrier to the outside of the building, away from the 'services zone' means there are far fewer potential penetrations to the air barrier and that there is no requirement for expensive specialist components such as airtight junction boxes, light switches or downlighter hoods.

SIMPLIFY PASSING AIR TIGHTNESS TESTING.

CONSISTENTLY QUICKER & EASIER TO INSTALL.

GREATLY REDUCE THE LIKELIHOOD OF EXPENSIVE REMEDIAL WORK.



WRAPTITE® LIQUID FLASHING

Wraptite Liquid Flashing is a high-quality, gunable, elastomeric, polyether, liquid applied flashing and detailing membrane. Wraptite Liquid Flashing is compatible with the entire line of our vapour permeable products for joint detailing in exterior sheathing panels.

- Continuous seal and system approach.
- Can be applied in damp conditions.
- Does not peel back when left exposed.
- Does not create build up in rough openings.
- Bonds to most construction materials.
- Non-sag.
- 100% solvent free.



WRAPTITE® TAPE

Air tightness tape, tear resistant with high vapour permeability for internal and external applications. Fully bonds to all standard substrates. Wraptite Tape is also available as a split release liner for ease of installation.

- Airtight yet vapour permeable
- Resilient composition, which resists punctures and tears during construction
- Flexibility, facilitating ease of application and detailing
- Wide operating temperature range (-40°C to +100°C)
- Can be left exposed for up to 120 days during construction
- No primer required
- No VOC's
- Available in 50m rolls in widths of 75mm, 100mm and 150mm
- Reaction to Fire Class B, s1, d0*





Wraptite is a unique patented external airtight and vapour permeable, self-adhered membrane which solves the problem of reliably achieving airtightness in buildings. Applying Wraptite to the outside of the building will mean there are fewer penetrations for services therefore the likelihood of expensive remedial work is greatly reduced.

- Airtight yet vapour permeable
- Water resistant
- Suitable for use on buildings over 18m
- No primer required
- Lightweight and easy to install
- Roll size 1.5m x 50m. Weight 292 gsm
- Reaction to Fire Class B, s1, d0*



FRAMETITE®

Frametite is a low-resistance vapour permeable airtight wall underlay. It is durable, flexible and lightweight allowing for easy installation. It offers temporary protection against wind-driven rain, snow and dust. The Frametite system comprises Frametite plus Wraptite Tape.

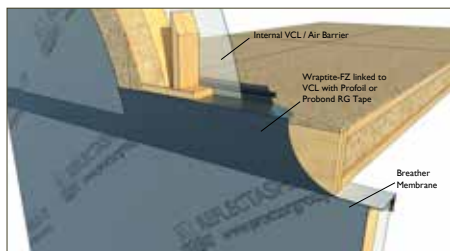
- Airtight yet vapour permeable
- Water resistant
- Resilient composition, which resists punctures and tears during construction
- Flexible, facilitating ease of application and detailing
- Can be left exposed for up to 120 days during construction
- Roll size 1.5m x 50m. Weight 92 gsm
- Class E Reaction to Fire



WRAPTITE® CORNERS

Wraptite Preformed Airtight Corners have been developed for the difficult areas around doors and windows where maintaining good air barrier continuity is difficult and time consuming. Wraptite corners' simple design and installation process makes sealing openings against air leakage simple, just peel off the release liner, stick the corners in place, then install the Wraptite membrane as normal. This helps achieve the best possible results in the shortest possible time.

- Airtight, yet vapour permeable
- Self-adhering
- Flexibility, facilitating ease of application and detailing
- Wide operating temperature range (-40°C to +100°C)



WRAPTITE® FZ

Wraptite-FZ is a vapour permeable air barrier membrane for use at floor junctions. It is durable, flexible and lightweight, and offers temporary protection against wind driven rain, snow and dust and is supplied in 750mm roll widths for easy site handling. Wraptite-FZ conforms to the Construction Products Directive and is manufactured under control of an ISO9001 quality management system.

- Airtight yet vapour permeable
- Protects floor cassettes from weather during construction phase
- Provides continuity of internal air barrier for increased airtightness to structure
- Reduces risk of condensation forming at floor junctions



*tested over 12mm Calcium Silicate Board as per BS EN 13238:2010



ACOUSTIC FLOOR SOLUTIONS

Unrivalled expertise gained through experience in this key area is further enhanced by extensive research and development.

Unique Acoustic Floating Floor solutions appropriate to the majority of flooring constructions, whether concrete or timber, for new build and refurbishment. Profloor Systems are designed to meet the requirements of the Building Regulations and Robust Details for impact and airborne sound.

IN-HOUSE ACOUSTIC TESTING LABORATORY.

TECHNICAL SERVICES INCLUDING ON SITE TESTING AND BATTEN LAYOUTS.

PRODUCT PRESENTATION ON 'SOUND PASSAGE THROUGH A BUILDING'.

PEFC™ & FSC® CERTIFIED

PEFC & FSC certified stocks upon request, subject to availability.

Look for FSC certified products.





PROFLOOR® DYNAMIC BATTEN

Type 55 / 67 / 81 / 91

Profloor Dynamic batten provides excellent levels of impact and airborne sound insulation. The unique dual foam not only provides the performance characteristics but enables minor irregularities in the surface of the sub-floor to be taken up.

- Robust Detail compliant **FFT1, FFT3 & FFT80 (Scotland)**
- Foam will not degrade through time unlike some fibrous materials.
- Can be used on timber or concrete floors.
- Moisture resistant impregnated battens are available.
- Non-load bearing partitions can be built off the finished floor.
- Foams are biologically stable.
- Timber battens are kiln dried to below 20% moisture content.
- 2.4m length batten for quicker installation.
- Suitable for new build and refurbishment.
- 6 - 8mm compression under load.



PROFLOOR® EXCEL BATTEN

Type 58 / 72 / 82

Profloor Excel Batten System provides exceptional levels of impact and airborne sound insulation using a unique vertically oriented fibre as the resilient layer. The cavity created by the batten can be used to accommodate services.

- Robust detail compliant **FFT1 & FFT3**.
- Single batten for use in main floor area, perimeters, kitchens and bathrooms.
- High performance resilient layer - 13mm.
- 2.4m length batten for quicker installation.
- Suitable for new build and refurbishment.
- 1 - 2mm compression under load.



PROFLOOR® SOLO BATTEN

Type 40 / 52

Profloor Solo Batten comprises a dressed softwood timber batten, with an integral closed cell resilient layer.

- Economical product.
- For use with concrete subfloors only, robust detail compliant **FFT3**.
- Ideal where a service run is required.
- Suitable for new build and refurbishment.
- 2.4m length batten for quicker installation.





PROFLOOR® DYNAMIC DECK 26

Profloor Dynamic Deck 26 System provides a high degree of isolation resulting in significant improvements in impact sound insulation.

- **FFT5** to Robust Details.
- Standard thickness 26mm.
- Hi-Load grade available.
- Suitable for both timber and concrete floors.
- Simple to install - no multi layer build up.
- Patented edge support strip prevents joint fracture.



PROFLOOR® EXCEL DECK 31

Profloor Excel Deck 31 System comprises a unique resilient layer bonded to flooring grade tongue and groove chipboard to provide enhanced acoustic performance.

- Exceptional airborne and impact sound insulation.
- Hi-Load grade available.
- Can be used on timber or concrete floors.
- **FFT5** to Robust Details.
- Standard thickness 31mm.



PROFLOOR® MICRO DECK 17

Profloor Micro Deck 17 System comprises a smaller panel size making installation easier in confined spaces.

- **FFT5** to Robust Details
- Ideal for situations where floor to ceiling height is critical.
- Standard thickness 17mm.
- Hi-Load grade available.
- Improves impact sound.
- Suitable for both timber and concrete floors.
- Deck is moisture resistant MDF.
- Patented edge support strip prevents joint fracture.
- Simple to install - no multi layer build up.



PROFLOOR® SOLO DECK 23

Profloor Solo Deck 23 System is an economical product designed to comply with building regulation requirements.

- Intended for use with concrete subfloors.
- Certified for use with relevant RD Floor constructions.
- Recycled composite resilient layer.
- One type for standard & hi-load areas (domestic applications).
- Suitable for **New Build** and Refurbishment.





PROFLOOR® LEVELLING SYSTEM

The Profloor Levelling System allows a level finished floor to be laid on a cambered, stepped, or uneven sub-floor:

- Meets robust details **FFT2** for concrete floors.
- Total floor depth of system, including an 18mm board finish, can be as low as 51mm and as high as 203mm.
- Dry construction means no drying out delays.
- Bespoke depths / applications on request.



ETHAFOAM® 2222

ETHAFOAM 2222 is a closed-cell polyethylene foam material designed for use as a resilient acoustic insulation layer in concrete floor structures.

- Superior impact sound insulation – conforms to European Building Standards.
- Minimal moisture retention – closed-cell structure allows use in humid environments.
- Lightweight – easy to install.
- Low profile installation – minimal increase in floor height.
- Ageing resistant – formulated to withstand degradation caused by alkaline in concrete floors.
- Highly resilient – withstands the rigours of an on-site environment.
- Versatile – can be installed as single or multiple layers dependent on space and performance requirement.



GROUND GAS PROTECTION

We have been in the Gas Protection market for the past 15 years promoting a range of gas membranes and venting components for use on contaminated land sites.

Adequate protection against the ingress of ground gas and vapours is crucial and we can provide safe, cost effective and value engineered solutions.

CHARACTERISATION OF SITE RISK IN LINE WITH CURRENT LEGISLATION.

MEMBRANES AND ACCESSORIES TO PROTECT AGAINST METHANE, CARBON DIOXIDE, RADON, HYDROCARBONS AND VOCS.

BBA CERTIFIED.

DESIGN AND CAD DETAILING SERVICES AVAILABLE.

LINKS TO SPECIALIST INSTALLATION CONTRACTORS AND INTEGRITY TESTING AND VALIDATION CONSULTANTS.

PRODUCT PRESENTATION ON 'BUILDING ON CONTAMINATED LAND'.



PROTECH SAGM

Protech SAGM is a self adhesive gas and waterproofing membrane for use in detailing and vertical installation applications. Protech SAGM can be used on any site where Carbon Dioxide, Radon or Methane is present.

- Fully compliant with BS 8485:2015 + A1:2019
- Self-Adhesive Membrane
- Multi Layer Membrane incorporating a aluminium foil layer
- Flexible Membrane to ease installation on site
- Tanking Applications
- Excellent for detailing work





PROTECH VOC FLEX

Protech VOC Flex complies with CIRIA C748 and BS8485:2015. It is a high performance 6 layer flexible proprietary reinforced VOC gas barrier and is suitable for use on brownfield sites that require protection from dangerous contaminants such as hydrocarbons. The Protech VOC Flex has been developed to ease installation on site due to the flexibility of the membrane. It is also suitable as a high performance damp proof membrane.

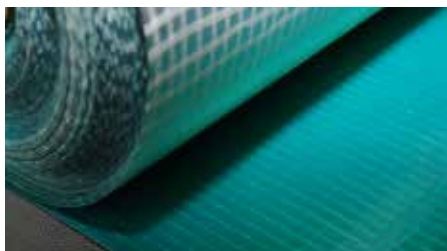
- Complies with CIRIA C748
- Exceptional chemical resistance
- Additional damp proofing protection
- Flexible membrane to ease installation on site
- Robust & durable multi-layer membrane
- High resistance to puncturing
- Achieves 2 points for gas protection in accordance with BS 8485:2015 + A1:2019 requirements



PROVOID 25 GAS VENTING SYSTEM

Provoid 25 is 25mm thick single sided geocomposite that provides a void beneath floor slabs which when connected to air inlets and outlets allows sufficient air changes to dilute gases to safe concentrations (as per Partners in Technology 1997). Provoid 25 dilutes ground gases such as Methane and CO₂ to harmless levels and the system should be designed to suit the gas regime on site.

- Roll Size: 900mm x 50m, 25mm thick
- Weight: 75kg per roll
- Choice of Gully vent boxes and periscopic vents

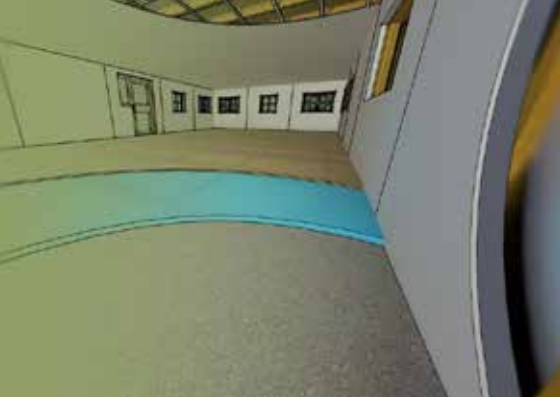


PROTECH GM SUPER

Protech GM Super is a high performance proprietary reinforced gas barrier that incorporates an aluminium foil layer, for maximum protection against ground-borne gases. This has been specifically designed to conform with the latest guidance documents.

- Resistant to Hydrocarbon Vapours (if not in direct contact with the ground), Methane, Carbon Dioxide, Radon and Damp
- Easy to install & flexible
- Can be welded or taped
- 2m x 50m. Weight 370 gsm
- Colour green/silver
- 1m wide Starter Band available for detailing at cavity walls
- Achieves 2 points for gas protection in accordance with BS 8485:2015 + A1:2019 requirements





THERMAL SOLUTIONS

We have been involved in the development of thermal insulation solutions for nearly 50 years, during which time the twin issues of energy efficiency and heat loss reduction have become key considerations in the design of every new building.

As thermal insulation requirements continue to grow, the industry is under increasing pressure to meet these requirements and the ever more stringent U-values demanded by them.

U-VALUE CALCULATIONS.

**Other thicknesses available on request*

***The Spacetherm A2 laminates are also available using Spacetherm Aerogel blanket insulation and is available in various thicknesses in multiples of 5.*



SPACETHERM® BLANKET

The Spacetherm Blanket consists of unfaced sheets of high performance aerogel composite insulation. The possible applications of the Spacetherm Blanket are virtually limitless as it has been used in doors, shutters, window reveals, boats, swimming pool covers and numerous other applications where thermal performance, space and thickness are critical.

- Class-leading performance
- Minimum loss of space
- Vapour permeable
- Hydrophobic
- 50+ year performance
- European Technical Approval & CE Mark
- Blanket size 1200 or 2400mm x 1200mm
- Thickness: 5mm or 10mm or multiples of
- K factor of 0.015 W/m²K



SPACETHERM® WALL LINER

Spacetherm WL (Wall Liner) is a high performance laminate specifically designed to be adhered to internal surfaces of existing solid walls without the need for mechanical fixings. Spacetherm WL consists of 10mm Spacetherm Aerogel insulation blanket bonded to 3mm Magnesium Board (MgO), for use in applications where improved thermal performance is required with limited space.

- Thin insulation system for hard to treat walls
- Minimum loss of room space
- Easy refurbishment
- No specialist trades required
- Allows wall to breathe
- Size: 1200 x 600mm
- Thickness: 13mm

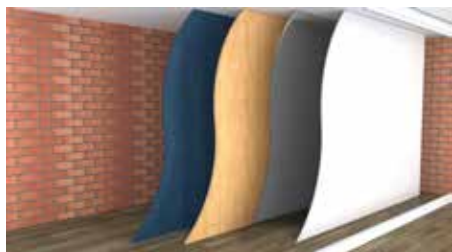


SPACETHERM® SLENTEX A2



Spacetherm A2 is a flexible, high-performance, silica aerogel-based insulation material of limited combustibility used for exterior and interior applications. Supplied in a variety of finishes, the substantial layers of Spacetherm A2 meet the requirements for A2 classification (insulation, MgO and plasterboard). The product is used to optimise the thermal performance and fire properties of façade systems in a number of ways. These include enhancing the thermal performance of the ventilated façade, and addressing thermal bridging in the façade. Spacetherm A2 is also useful in minimising thermal bridges around windows in areas such as window reveals and roller shutter cases.

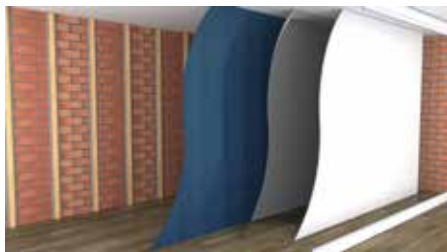
- Class leading fire performance from an Aerogel insulation
- Superior thermal performance
- Limited combustibility
- Water vapour diffusion open
- Permeable
- Flexible
- Thinnest A2 aerogel insulation available
- Thickness: 10mm, 20mm, 30mm, 40mm*
- K factor of 0.019 W/m²K



SPACETHERM® A2 DIRECTFIX**

Spacetherm A2 Directfix is a high performance laminate which is specifically designed to be fixed directly to the wall. It consists of Spacetherm Slentex A2 insulation blanket bonded to plasterboard, with an additional pre-bonded plywood reinforcement to the plasterboard. This reinforced laminate will reduce the risk of shot-fired nails failing to create a robust fix and will also reduce the risk of drill bit snagging, should you be using a traditional mechanical fixing method.

- Thin insulation system for hard to treat walls
- Class leading fire performance for aerogel insulation
- Minimum loss of room space
- Direct fix to solid walls
- Includes an integrated vapour control layer
- Constant long term thermal performance 50 years
- Non-Hazardous material



SPACETHERM® A2 WALLBOARD**

Spacetherm A2 Wallboard is a high performance laminate which is specifically designed to be fixed to timber straps. It consists of Spacetherm Slentex A2 insulation blanket bonded to plasterboard, and is ideal for use in applications where low U-values are required but space is at a premium. Spacetherm A2 Wallboard is supplied with foil faced plasterboard as standard to reduce condensation. Plain plasterboard is available on request.

- Can be installed directly to solid walls or onto straps
- Ideal for hard to treat solid walls
- Ideal solution where maximising internal space is critical
- Class leading fire performance for aerogel insulation





SPACETHERM® A2 MULTI**

Spacetherm A2 Multi is a high-performance laminate specifically designed to be laid directly onto existing floors & walls. Spacetherm Multi consists of Spacetherm Slentex A2 insulation blanket bonded to a 6mm Magnesium Oxide Board. Spacetherm Slentex A2 blanket is available in various thicknesses from 10mm to 40mm (in multiples of 10).

- Class leading fire performance for aerogel insulation
- Thin insulation system for floors & walls
- Minimum loss of room space
- Can accept most floor coverings
- Moisture resistant
- One board - multiple applications
- Size: Floors/WRB/Soffit Lining - 1200 x 600mm
Walls - 2400 x 1200mm
- Thickness: From 16mm



SPACETHERM® A2 WRB**

Spacetherm A2 WRB (window reveal board) is a high-performance laminate specifically designed to be fixed or glued to the existing solid wall at the window reveals. Spacetherm WRB consists of Spacetherm Slentex A2 insulation blanket bonded to plasterboard or Magnesium Oxide board, with or without plywood reinforcement, depending on fixings.

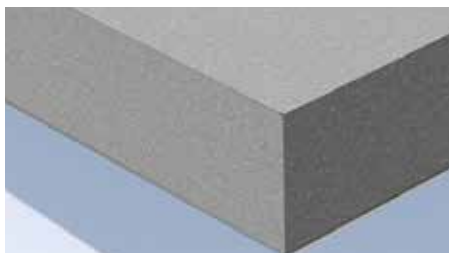
- Class leading fire performance for aerogel insulation
- Ultra thin insulation system for window reveals
- The best thermal performance available
- Minimum loss of space around openings
- Can be used in partnership with traditional dry-lining
- Glued or direct fixed depending on substrate



SPACETHERM® A2 (COLD BRIDGE STRIP)**

Designed to prevent cold bridging through a component or element of a structure. Spacetherm A2 CBS consists of Spacetherm Slentex A2 insulation blanket encapsulated in various materials. Spacetherm A2 CBS is an ideal choice for timber or steel frame structures and on request, can be cut to a variety of widths to suit different applications. In addition to timber and steel structures, it can also be used in other applications where cold bridging is an issue.

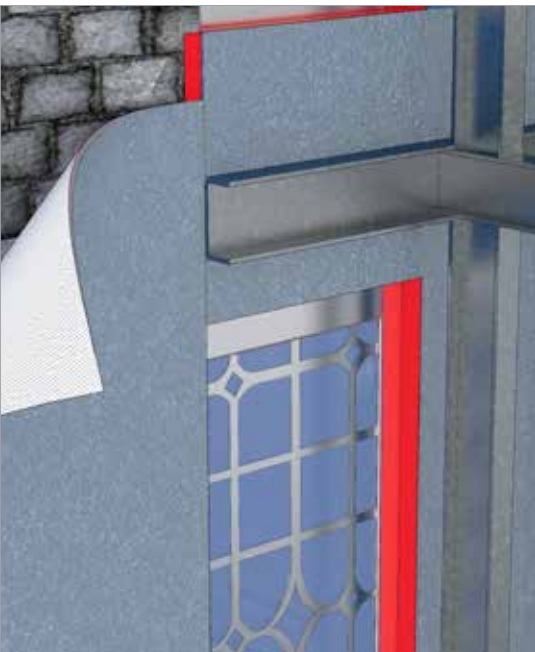
- Class leading fire performance for aerogel insulation
- Thin thermal bridge insulation, ideal for timber or steel frame structures
- Fully encapsulated
- Fast and easy to fix with adhesive backing
- Available cut to any width in lengths up to 2.4m



XENERGY™ LBH

This extruded polystyrene foam material developed by Dow is more than an effective thermal insulant. It has a unique combination of physical and chemical characteristics that make it a key component within a wide variety of today's high performance composite structures. XENERGY LBH is lightweight, yet exceptionally strong, safe in use and capable of being precision - engineered. For use in floors, basements, flat and pitched roofing applications on both new build and refurbishment projects.

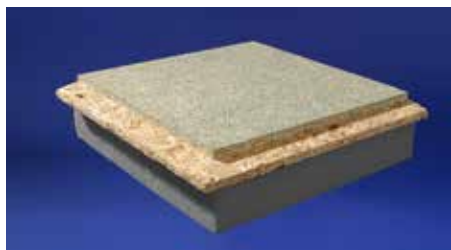
- High compressive strength.
- Low moisture absorption.
- Excellent thermal performance.
- Lightweight and strong.
- Good bonding properties.
- User friendly.
- Will last lifetime of floor; wall or ceiling.
- K factor of 0.031 W/m²K.



WRAPTHERM®

Wraptherm is a composite comprising 10mm Spacetherm Aerogel Insulation blanket bonded to the face of Wraptite® vapour permeable, airtight self-adhesive membrane. Use of Wraptherm provides improved airtightness levels combined with a reduction in thermal bridging. Wraptherm was developed for use in the refurbishment of existing buildings where there was a requirement to enhance both the thermal and airtightness performance of the building but can also be used in new build.

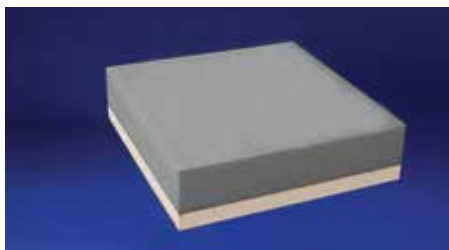
- Single product airtightness and thermal bridging solution
- Ideal for Refurbishment and Façade Retention projects
- Water resistant yet vapour permeable membrane
- Leading Airtightness performance
- Reduces thermal bridging
- Continuous airtightness seal
- Tested low vapour resistance



PLUSFLOOR LAMINATES

XENERGY LBH, bonded to P5 moisture resistant, tongue - and - groove, chipboard flooring, which can be laid directly on both concrete and timber - joisted floors in the same way as plain chipboard.

- Exceptional compressive strength and moisture resistance.
- Eliminates the need for underfloor insulation.
- Overcomes the problem of cold-bridging at joists.



PLUSBOARD LAMINATES

This XENERGY LBH plasterboard laminate was developed as the answer to the requirement for high-quality, internal wall insulation. It is applied to the inner wall of traditional or timber - frame buildings using conventional techniques. The thickness of insulant needed can be varied to meet the U-value required with different construction materials.



SPECIALIST SERVICES

Technical Support:

Our technical back-up has always been an integral part of our strategic development, with an outlook based on advanced technical solutions, rather than commodity driven.

Our dedicated technical team is focused on providing high quality advice and support to our customers all the way from drawing board to site.

ONLINE TECHNICAL ADVICE.

U VALUE CALCULATIONS.

CONDENSATION RISK ANALYSIS.

IN HOUSE ACOUSTIC LABORATORY TESTING.

ACOUSTIC TAKE OFFS

ACOUSTIC LAYOUT

CAD DESIGN

SITE ADVICE

PRODUCT PRESENTATIONS



WUFI CALCULATIONS

We advise our customers using WUFI software, which is fully compatible with BS EN 15026, and dynamically predicts moisture movement and storage as well as condensation for each location. The designer is able to achieve a minute-by-minute prediction over a given period of years, as specified by the designer. The programme considers a worst-case scenario with the injection of air and/or moisture leaks at the source to predict the drying out of the fabric build up.



CONDENSATION RISK ANALYSIS

Condensation can significantly reduce the effectiveness of insulation, and result in damage to the building fabric. A Condensation Risk Analysis evaluates the likelihood of interstitial condensation in your roof or wall construction. These calculations are regularly required by building control to demonstrate compliance with building regulation requirements. Calculations are performed free of charge when using our products.



BIM OBJECTS

Our new range of Performance Specifications & BIM content, covering our Condensation Control Membranes, External Airtight Barriers, Acoustics Flooring Solutions, Ground Gas Protection Systems & Thermal Insulation range is now available in a combination of Revit Project files (.rvt), Revit Detail Component files (.rfa), Industry Foundation Class files (.ifc) & PDF format.



EXPORT DIVISION

International supply within the construction industry demands the highest levels of knowledge and responsiveness. Our overseas business interests range from Tokyo and Sydney to Seattle. We take time to investigate local knowledge of construction build, climatic considerations and accreditation requirements. These key skills are essential to our global vision and continued growth within the international construction products market.

Roofshield preserves Scottish heritage

Steeped in Scottish history, a beautiful 15th century Estate in Stonehaven is being preserved thanks to the protection of Roofshield, one of the highest performing roofing membrane solutions. The Ury Estate, it is claimed, was once home to the Barclay Banking family and includes Ury House a three and four storey listed building of Tudor/Jacobean style, which is to be restored to its former glory by leading developer the FM Group.

WCP Architects, Aberdeen specified Roofshield, the renowned pitched roof underlay, which is both air and vapour permeable, for the roof refurbishment. Contractor Pert Bruce was selected to carry out the installation.

The complex nature of the roof structures of historic buildings requires careful consideration of moisture management, and condensation control. The majority of vapour and air permeable underlays use an airtight VP film layer to achieve their performance rather like a Gore-Tex jacket. While water resistant, they cannot completely prevent condensation within the roof space; meaning additional ventilation has to be introduced in order to allow air to circulate.



Spacetherm® - outstanding performance for grade II listed theatre

Nottingham Playhouse is a Grade II* Listed theatre with a conventional proscenium layout, seating an audience of 770. It has English Heritage importance, and is an iconic landmark, with hundreds of productions, events and exhibitions taking place throughout the year attracting thousands of visitors.

The challenge for Gleeds Building Surveying Ltd was to reduce the Playhouse's energy bills by making the 1960s building significantly more energy efficient – without damaging or altering the building appearance and without disrupting theatre operations. Preserving the authenticity and integrity of the Playhouse needed to be balanced with the demands of modern use.

The innovative façade design included the use of 15mm Spacetherm blanket which was used between the Glazing and Board to improve thermal performance of the building. The Spacetherm Blanket consists of unfaced sheets of high performance aerogel composite insulation. The possible applications of the Spacetherm Blanket are virtually limitless as it has been used in doors, shutters, window reveals, boats, swimming pool covers and numerous other applications where thermal performance, space and thickness are critical.

As a result of this work, Spacetherm insulation has provided a 34.30% reduction in heating load which works out a significant cost saving.



Wraptite enhances thermal performance of Zero Bills Home

Wraptite airtight membrane has been selected by the Zero Bills Home Company and RIBA award winning development pioneers ZEDfactory in their latest innovative solution to deliver zero carbon housing. The Zero Bills Home has been built at the world-renowned BRE Innovation Park in Watford.

Wraptite, the only self-adhering vapour permeable air barrier certified by the BBA, was installed as part of the OSB panel construction of the home. The use of Wraptite in the construction makes a significant contribution to a building's thermal performance by preventing lateral air movement. It also provides high vapour permeability in a continuously sealed, self-adhered, airtight membrane.

Unlike internal air barriers, which can be complex and costly to install due to the need to accommodate building services such as electrical, lighting, heating and drainage systems, Wraptite was applied externally, quickly and easily to the OSB boards in continuous pieces. The membrane fully bonds to virtually any substrate, requiring no mechanical attachment to suppress air leakage around junctions or penetrations. On the Zero Bills Home project the results for airtightness were exemplary, achieving on the first test 1.3 ac/h at 50 pascals.

Another key benefit of the system is that Wraptite's high vapour permeability allows damp sheathing to dry quickly and moisture vapour to escape. This ensures good indoor air quality and reduces the likelihood of mould, mildew, condensation, timber distortion and metal corrosion.



Affordable homes benefit from acoustic floor levelling system

Profloor Levelling System from the A. Proctor Group has once again been specified to enable a level finished floor to be installed on uneven concrete floors. The Lincoln Court development at Haines Way consists of 22 new affordable homes available for rent from Watford Community Housing Trust.

Having successfully used Profloor Levelling System on a number of projects, Jarvis Contracting Ltd consulted with the manufacturers on the most suitable solution to accommodate the required floor build up.

Developed to allow a level finished floor to be installed on a cambered, stepped, or uneven sub-floor, Profloor Levelling System is typically used to take out the irregularities in mortar screeded floors. The floor is levelled by inserting packers in each levelling base to adjust the level of the timber battens, and create a level finished floor, with no need for wet trades in the process.

Profloor Levelling System is ideal for conversions and new build developments of properties and flats where impact and airborne sound reduction is mandatory. It is easy to install, and enables developers and contractors to fully meet the performance requirements of the current building regulations.



£5m School sports facility receives first class protection

Façadeshield UV has been successfully installed as part of an impressive new school sports complex at St Aloysius' College in Glasgow.

Burnet Bell Architects designed the brand new £5 million sports facility, and the project managed by main contractor CBC. The design included an attractive rainscreen clad finish, which was constructed by national contractor Topek Limited.

Steven McCrory, Design & Procurement Manager at Topek explains, "In technical consultation with the A. Proctor Group, Façadeshield UV was selected to protect the fabric and performance of the insulation installed behind the rainscreen cladding. The design of the external cladding had a perforated pattern, which meant that sunlight could shine through to the insulation boards behind it. The foil face of the insulation was not resistant to ultra violet light, and therefore the introduction of the Façadeshield UV membrane was essential in preserving the quality of the insulation."

"Rainscreen cladding is a technically demanding construction, which requires the contractor to accept responsibility for the "through wall process" including air & water tightness, condensation control and structural stability. The introduction of Façadeshield UV membrane enabled us to ensure that the building fabric will maintain good water resistance and breathability behind the cladding."



Protech VOC Flex tests prove best in class protection for brownfield development

A new high class performance VOC membrane Protech VOC Flex has been launched by the A. Proctor Group as part of its range of ground gas protection products. Protech VOC Flex is a multi layer flexible reinforced VOC Hydrocarbon/ Chemical Barrier suitable for use on brownfield sites that require protection from dangerous contaminants such as hydrocarbons.

Key guidance, standards and codes of practice relating to protection and best practice when building on contaminated land is given in CIRIA C748* and BS8485:2015**. As a minimum VOC membranes must be tested against the 9 chemicals for vapour permeability (ISO 15105-2) and after immersion (EN 14414). Protech VOC Flex was tested against several additional chemicals over and above the 9 listed. The 9 chemicals included are: benzene, toluene, ethyl benzene, m,p xylene, hexane, vinyl chloride, tetrachloroethene (PCE), trichloroethene TCE, and naphthalene.

Protech VOC Flex has been extensively tested by an independent testing authority and fully complies with the requirements of BS 8485:2015 + A1:2019 where methane permeability must be <40ml/m²/day. Protech VOC Flex was tested against several additional chemicals over and above the 9 listed.

Aubrey Machin, Ground Protection National Technical Sales Manager for the Group explains, "with the continued emphasis and urgent need for brownfield development, more is demanded from the systems that are used for ground gas protection. We wanted to develop a new high performance membrane that is designed specifically to make the development of brownfield sites safer and easier. In order that designers and installers can have ultimate confidence in barrier membranes, it is essential that they consider products which are able to provide accurate test data and not simply modelled data. Protech VOC Flex has been comprehensively tested and all data validated ensuring specifiers can have full confidence in the product in use."

*CIRIA C748 Guidance on the use of plastic membranes as VOC vapour barriers

**BS8485:2015 + A1:2019 Code of practice for the design of protective measures for methane and carbon dioxide ground gases for new buildings





"I believe the success of the A.Proctor Group is down to a solid foundation of innovation backed up by an excellent loyal and committed team, every one of them playing an important role in our continued success. Scotland provides us with a unique platform to launch our ideas, systems and products. I am fiercely proud of this heritage and our brand."

Keira Proctor
Managing Director

