



**Chroma-Q™**  
BRILLIANT SOLUTIONS

**Specification Sheet - Version: 1.0**  
**Chroma-Q™ Studio Force D 72**  
**Daylight White LED Battens**  
**Part No: CHSFD72NF**

**DESCRIPTION**

The fixture shall provide a very powerful 28,000 hot lumens output for washing large areas.  
The fixture shall be suitable for creating a wide range of lighting applications, including key-lighting, uplighting, backlighting and wash applications.  
The fixture shall provide 6,100K CCT daylight white light output.  
The fixture shall provide a CRI of 70.  
The fixture shall provide a smooth, linear dimming curve.  
The fixture shall feature a built-in stand-alone mode.  
The fixture shall feature a built-in power supply.  
The fixture shall be manufactured from extruded material.

**FEATURES**

- 6,100K CCT daylight white
- Extreme output - 20,000 lumens (48) / 28,000 lumens (72)
- Extremely smooth, uniform wash
- Theatrical grade dimming
- "Ideal for TV, film, touring, exhibitions, corporate events and theatre"
- Choice of 1.2m / 4ft (48) and 1.8m / 6ft (72) lengths
- Camera friendly
- PowerCon input and output for easy daisy chaining of fixtures
- Optional cyc and border light lens media accessories
- Flat end plates for seamless wall-washing
- Built-in power supply
- Hidden quick release fixings
- Rugged extruded aluminium body

**ORDERING INFORMATION**

CHSFD72NF: Chroma-Q Studio Force D 72, body finished in black

**ACCESSORIES**

CHCFCL72: Chroma-Q Cyc Lens For Force 72  
CHCFBL72: Chroma-Q Border Light Lens For Force 72  
CHCFHS72: Chroma-Q Half Snoot For Force 72

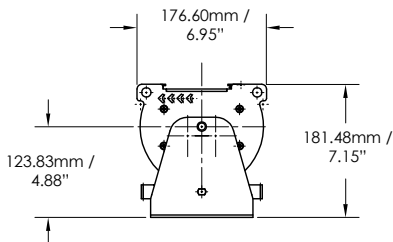
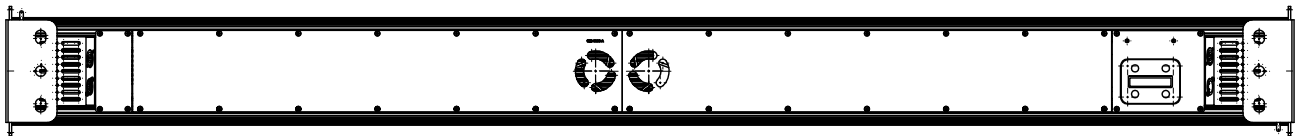
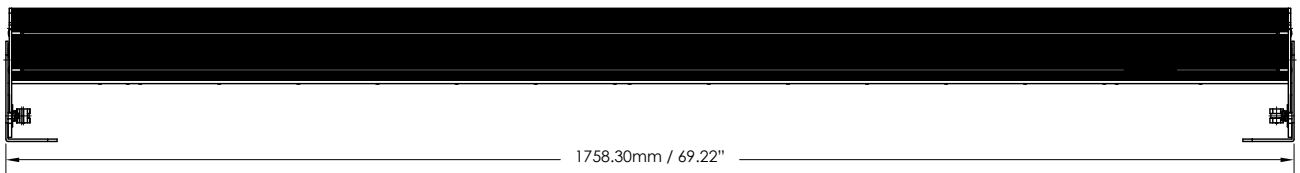
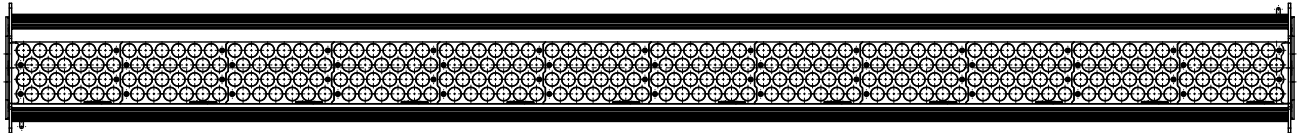
**OVERALL SPECIFICATIONS**

Net dimensions (without fixings):	Width: 1,759mm / 69.25"
	Height: 182mm / 7.25"
	Depth: 177mm / 7"
Net weight:	22kgs / 48lbs
Shipping dimensions:	Width: 1,855mm / 73"
	Height: 305mm / 12"
	Depth: 320mm / 12.5"
Shipping weight:	25kgs / 56lbs
Power supply:	Built-in
Power input rating:	100-240V AC, 50-60 Hz, 700VA
Power consumption:	660W
Typical power & current:	Measurements done with all LEDs at max intensity. Measurements made at nominal voltage. Allow for a deviation of +/- 10%.
Power connector in/out:	PowerCon
Data connectors in/out:	XLR 5-pin
Control protocol:	ANSI E1.11 USITT DMX 512-A
Cooling system:	Forced - 2 fans
Operating temperature:	0°C to 40°C
Construction:	Anodised aluminium extrusion
Colour:	Black
Built in hardware:	Quick release lever for tilt adjustment
IP Rating:	IP20
Approvals:	CISPR 22 :2006/EN55022 :2006 & CISPR 24 :1997/EN55024 :1998, ICES-003 :2004 & FCC Part 15 Subpart B: 2007, CSA C22. No. 166-M1983:R2008 UL 1573:2003; UL 8750
LED engines:	12
LEDs per engine:	24 Cold White
Total LEDs:	288
Control modes:	48 channels Dim48 2 channels FxDim 12 channels Dim12 1 channel Dim1x 1 channel Look Select Master Standalone Slave Standalone Manual Theatrical
Diming Curve:	Theatrical
Variable effects engine:	Yes
Effects parameters:	Intensity Effects
Hot Lumen output:	White 28,000 hot lumens
CRI:	>70
Optics:	Specialised close focus lens
Beam angle:	~23°
Beam Angle With Optional Cyc Optic:	80 x 30° (approx.)
Beam Angle With Optional Border Optic:	60° (approx.)
Beam distribution:	Asymmetrical direct illumination
CCT:	6,100K (+/- 200K)
Lamp life:	L70 at 50,000 hours
Colour Gamut:	Performance enhanced



**Chroma-Q™**  
BRILLIANT SOLUTIONS

**Specification Sheet - Version: 1.0**  
**Chroma-Q™ Studio Force D 72**  
**Daylight White LED Battens**  
**Part No: CHSFD72NF**



**HQ, UK & International Sales**  
A.C. Entertainment Technologies Ltd.  
Tel: +44 (0)1494 446000  
Fax: +44 (0)1494 461024  
sales@ac-et.com  
www.ac-et.com

**Northern UK Sales**  
A.C. Entertainment Technologies Ltd.  
Tel: 0113 255 7666  
Fax: 0113 255 7676  
acnorth@ac-et.com  
www.ac-et.com

**North American Sales**  
A.C. Lighting Inc.  
Tel: 416-255-9494  
Fax: 416-255-3514  
northamerica@aclighting.com  
www.aclighting.com/northamerica

**Asian Sales**  
A.C. Lighting Asia KK  
Tel: +81 (0)48-475-9377  
Fax: +81 (0)48-475-9355  
asia@aclighting.com  
www.aclighting.com/asia

Chroma-Q and all associated product names are recognised trademarks, for more information visit [www.chroma-q.com/trademarks](http://www.chroma-q.com/trademarks). The rights and ownership of all trademarks are recognised. The information contained herein is correct at the time of printing, however as we are constantly refining our product range we reserve the right to change the specification without notice. E&OE.