



Chroma-Q™
BRILLIANT SOLUTIONS

Specification Sheet - Version: 1.0
Chroma-Q™ Studio Force D 48
Daylight White LED Battens
Part No: CHSFD48NF

DESCRIPTION

The fixture shall provide a very powerful 20,000 hot lumens output for washing large areas.
The fixture shall be suitable for creating a wide range of lighting applications, including key-lighting, uplighting, backlighting and wash applications.
The fixture shall provide 6,100K CCT daylight white light output.
The fixture shall provide a CRI of 70.
The fixture shall provide a smooth, linear dimming curve.
The fixture shall feature a built-in stand-alone mode.
The fixture shall feature a built-in power supply.
The fixture shall be manufactured from extruded material.

FEATURES

- 6,100K CCT daylight white
- Extreme output - 20,000 lumens (48) / 28,000 lumens (72)
- Extremely smooth, uniform wash
- Theatrical grade dimming
- "Ideal for TV, film, touring, exhibitions, corporate events and theatre"
- Choice of 1.2m / 4ft (48) and 1.8m / 6ft (72) lengths
- Camera friendly
- PowerCon input and output for easy daisy chaining of fixtures
- Optional cyc and border light lens media accessories
- Flat end plates for seamless wall-washing
- Built-in power supply
- Hidden quick release fixings
- Rugged extruded aluminium body

ORDERING INFORMATION

CHSFD48NF: Chroma-Q Studio Force D 48, body finished in black

ACCESSORIES

CHCFCL48: Chroma-Q Cyc Lens For Force 48
CHCFBL48: Chroma-Q Border Light Lens For Force 48
CHCFHS48: Chroma-Q Half Snoot For Force 48

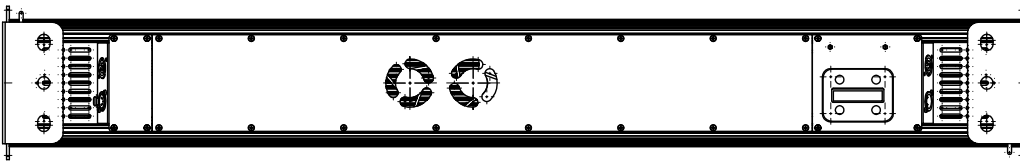
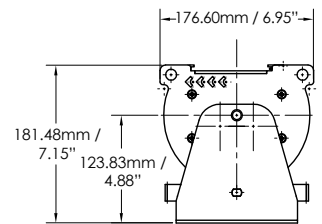
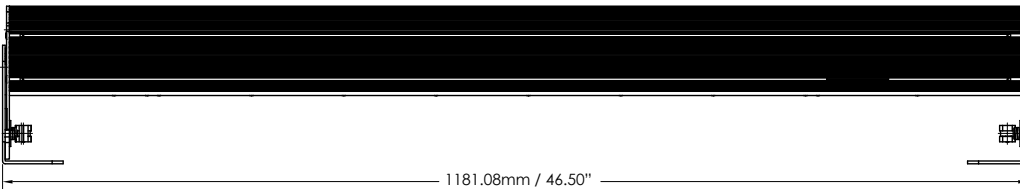
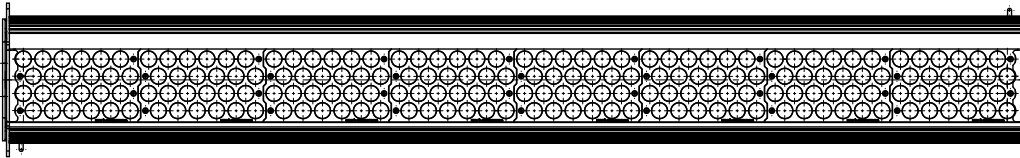
OVERALL SPECIFICATIONS

Net dimensions (without fixings): Width: 1,181mm / 46.5"
Height: 182mm / 7.25"
Depth: 177mm / 7"
Net weight: 15kgs / 33lbs
Shipping dimensions: Width: 1,295mm / 51"
Height: 305mm / 12"
Depth: 320mm / 12.5"
Shipping weight: 18kgs / 40lbs
Power supply: Built-in
Power input rating: 100-240V AC, 50-60 Hz, 400VA
Power factor: 0.995
Power consumption: 480W
Typical power & current: Measurements done with all LEDs at max. intensity. Measurements made at nominal voltage. Allow for a deviation of +/- 10%.
Power connectors in/out: PowerCon
Data connectors in/out: XLR 5-pin
Control protocol: ANSI E1.11 USITT DMX 512-A
Cooling system: Forced - 2 fans
Construction: Anodised aluminium extrusion
Colour: Black
Built in hardware: Quick release lever for tilt adjustment
IP Rating: IP20
Approvals: CISPR 22 :2006/EN55022 :2006 & CISPR 24 :1997/EN55024 :1998, ICES-003 :2004 & FCC Part 15 Subpart B: 2007, CSA C22. No. 166-M1983:R2008 UL 1573:2003; UL 8750
LED engines: 8
LEDs per engine: 24 Cold White
Total LEDs: 192
Control modes: 32 channels Dim32
2 channels FxDim
8 channels Dim8x
1 channel Dim1x
1 channel Look Select
Master Standalone
Slave Standalone
Manual
Theatrical
Diming Curve: Theatrical
Variable effects engine: Yes
Effects parameters: Intensity Effects
Hot Lumen output: White 20,000 hot lumens
CRI: >70
Optics: Specialised close focus lens
Beam angle: ~23°
Beam Angle With
Optional Cyc Optic: 80 x 30° (approx.)
Beam Angle With
Optional Border Optic: 60° (approx.)
Beam Distribution: Asymmetrical direct illumination
CCT: 6,100K (+/- 200K)
Lamp life: L70 at 50,000 hours
Colour Gamut: Performance enhanced



Chroma-Q™
BRILLIANT SOLUTIONS

Specification Sheet - Version: 1.0
Chroma-Q™ Studio Force D 48
Daylight White LED Battens
Part No: CHSFD48NF



HQ, UK & International Sales
A.C. Entertainment Technologies Ltd.
Tel: +44 (0)1494 446000
Fax: +44 (0)1494 461024
sales@ac-et.com
www.ac-et.com

Northern UK Sales
A.C. Entertainment Technologies Ltd.
Tel: 0113 255 7666
Fax: 0113 255 7676
acnorth@ac-et.com
www.ac-et.com

North American Sales
A.C. Lighting Inc.
Tel: 416-255-9494
Fax: 416-255-3514
northamerica@aclighting.com
www.aclighting.com/northamerica

Asian Sales
A.C. Lighting Asia KK
Tel: +81 (0)48-475-9377
Fax: +81 (0)48-475-9355
asia@aclighting.com
www.aclighting.com/asia

Chroma-Q and all associated product names are recognised trademarks, for more information visit www.chroma-q.com/trademarks. The rights and ownership of all trademarks are recognised. The information contained herein is correct at the time of printing, however as we are constantly refining our product range we reserve the right to change the specification without notice. E&OE.