

# NILE SUSPENDED

Suspended Tubular Omnidirectional Lighting

## PRODUCT DESCRIPTION

<b>MOUNTING</b>	SUSPENDED
<b>LIGHT SOURCE</b>	LED
<b>LIGHT DISTRIBUTION</b>	DIRECT
<b>MATERIALS</b>	PC / ALUMINIUM
<b>OPTICS</b>	OPAL DIFFUSER

Minimalist and classic in design, the Nile is a clean cut tubular luminaire that can add a personality to your design. The clean aesthetics and satin diffuser will enhance any modern space allowing the light to add an extra layer of presence in the environment. Suspend it horizontally or vertically, at an obscure angle, or jazz it up with a red coloured suspension cable, the choice is yours.

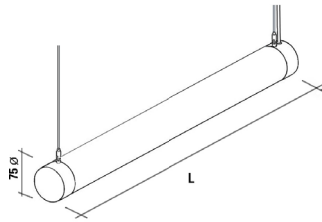
Powered by LED COB technology, the tubular diffuser distributes soft and uniform light in an omni-directional style for a comfortable level of illumination whilst keeping the energy consumption in check.

Ideal as a creative feature luminaire for breakout spaces, reception areas and public areas.

## PRODUCT CODE

### NILE SUSPENDED - DIRECT

l (mm)		
587	LED 1x15W / 2,200 lm*	55-EH1-F22-8**-*0*
868	LED 1x23W / 3,300 lm*	55-EH1-F33-8**-*0*
1149	LED 1x29W / 4,400 lm*	55-EH1-F44-8**-*0*
1430	LED 1x36W / 5,500 lm*	55-EH1-F55-8**-*0*
1711	LED 1x43W / 6,600 lm*	55-EH1-F66-8**-*0*
1992	LED 1x50W / 7,700 lm*	55-EH1-F77-8**-*0*



### COLOUR TEMPERATURE

3000K	4000K	3000 K	55-EH*-F**-830-*0*
		4000 K	55-EH*-F**-840-*0*

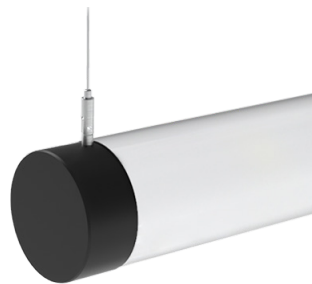
\* Luminous Flux taken at 3000K

### CONTROL

NON DIM	DALI DIM	NON DIM	55-EH*-F**-8**-*0*
		DALI DIM	55-EH*-F**-8**-*0*

### FINISH

BLACK	WHITE	GREY	BLACK	55-EH*-F**-8**-*0-D
			WHITE	55-EH*-F**-8**-*0-C
			SILVER	55-EH*-F**-8**-*0-B



# NILE SUSPENDED

Suspended Tubular Omnidirectional Lighting

## PRODUCT DESCRIPTION

<b>MOUNTING</b>	SUSPENDED
<b>LIGHT SOURCE</b>	LED
<b>LIGHT DISTRIBUTION</b>	DIRECT - INDIRECT
<b>MATERIALS</b>	PC / ALUMINIUM
<b>OPTICS</b>	OPAL DIFFUSER

Minimalist and classic in design, the Nile is a clean cut tubular luminaire that can add a personality to your design. The clean aesthetics and satin diffuser will enhance any modern space allowing the light to add an extra layer of presence in the environment. Suspend it horizontally or vertically, at an obscure angle, or jazz it up with a red coloured suspension cable, the choice is yours.

Powered by LED COB technology, the tubular diffuser distributes soft and uniform light in an omni-directional style for a comfortable level of illumination whilst keeping the energy consumption in check.

Ideal as a creative feature luminaire for breakout spaces, reception areas and public areas.

## PRODUCT CODE

### NILE SUSPENDED- DIRECT/INDIRECT

l (mm)	
1149	LED 1x44W / 6,600 lm* <b>55-EH3-F67-8**-0-*</b>
1430	LED 1x58W / 8,800 lm* <b>55-EH3-F88-8**-0-*</b>
1711	LED 1x72W / 11,000 lm* <b>55-EH3-F11-8**-0-*</b>
1992	LED 1x86W / 13,200lm* <b>55-EH3-F13-8**-0-*</b>

### COLOUR TEMPERATURE

3000K	4000K	3000 K <b>55-EH*-F**-830-0-*</b>
		4000 K <b>55-EH*-F**-840-0-*</b>

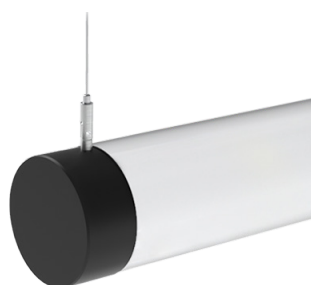
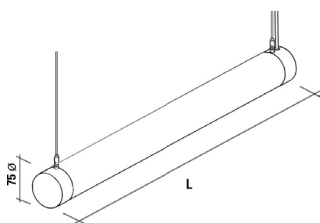
\* Luminous Flux taken at 3000K

### CONTROL

NON DIM	DALI DIM	NON DIM <b>55-EH*-F**-8**-K0-*</b>
		DALI DIM <b>55-EH*-F**-8**-J0-*</b>

### FINISH

BLACK	WHITE	GREY	BLACK <b>55-EH*-F**-8**-0-D</b>
			WHITE <b>55-EH*-F**-8**-0-C</b>
			SILVER <b>55-EH*-F**-8**-0-B</b>



SCAN TO VIEW  
A PROJECT



XYZ BUILDING,  
MANCHESTER